

Product datasheet for PH307285

PLEKHA1 (NM_021622) Human Mass Spec Standard

Product data:

Product Type:	Mass Spec Standards
Description:	PLEKHA1 MS Standard C13 and N15-labeled recombinant protein (NP_067635)
Species:	Human
Expression Host:	HEK293
Expression cDNA Clone or AA Sequence:	RC207285
Predicted MW:	45.6 kDa
Protein Sequence:	>RC207285 protein sequence Red=Cloning site Green=Tags(s)

MPYVDRQNRICGFLDIEENENSGKFLRRYFILDTRSDSFVWYMDNPQNLPSGSSRVGAIKLTYSKVS
TKLRPKAEFCVMNAGMRKYFLQANDQQDLVEWVNLNKAIKITVPKQSDSQPNSDNL SRHGECGKKQVS
YRTDIVGGVPIITPTQKEEVNECGESIDRNLRKRSQSHLPYFTPKPPQDSAVIKAGYCVKQGAVMKNWKR
RYFQLDENTIGYFKSELEKEPLRVIPLKEVHKVQECKQSDIMMRDNLFEIVTTSRTFYVQADSPEEMHWS
IKAVSGAIVAQRGPRGSASSEHPPGPSESKHAFRPTNAATATSHSTASRSNSLVSTFTMEKRGFYESLAK
VKPGNFVKVQTVSPREPASKVTEQALLRPQSKNGPQEKDCDLVDLDDASLPVSDV

TRTRPLEQKLISEEDLAANDILDYKDDDDKV

Tag:	C-Myc/DDK
Purity:	> 80% as determined by SDS-PAGE and Coomassie blue staining
Concentration:	>0.05 µg/µL as determined by microplate BCA method
Labeling Method:	Labeled with [U- ¹³ C ₆ , ¹⁵ N ₄]-L-Arginine and [U- ¹³ C ₆ , ¹⁵ N ₂]-L-Lysine
Buffer:	25 mM Tris-HCl, 100 mM glycine, pH 7.3
Storage:	Store at -80°C. Avoid repeated freeze-thaw cycles.
Stability:	Stable for 3 months from receipt of products under proper storage and handling conditions.
RefSeq:	<u>NP_067635</u>
RefSeq Size:	3732
RefSeq ORF:	1212
Synonyms:	TAPP1
Locus ID:	59338



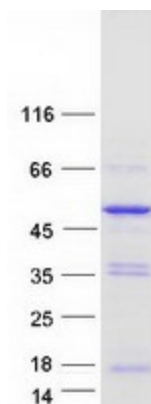
[View online »](#)

UniProt ID: [Q9HB21](#)

Cytogenetics: 10q26.13

Summary: This gene encodes a pleckstrin homology domain-containing adapter protein. The encoded protein is localized to the plasma membrane where it specifically binds phosphatidylinositol 3,4-bisphosphate. This protein may be involved in the formation of signaling complexes in the plasma membrane. Polymorphisms in this gene are associated with age-related macular degeneration. Alternate splicing results in multiple transcript variants. A pseudogene of this gene is found on chromosome 5.[provided by RefSeq, Sep 2010]

Product images:



Coomassie blue staining of purified PLEKHA1 protein (Cat# [TP307285]). The protein was produced from HEK293T cells transfected with PLEKHA1 cDNA clone (Cat# [RC207285]) using MegaTran 2.0 (Cat# [TT210002]).