

Product datasheet for PH307282

SOHLH1 (NM_001012415) Human Mass Spec Standard

Product data:

Product Type:	Mass Spec Standards
Description:	SOHLH1 MS Standard C13 and N15-labeled recombinant protein (NP_001012415)
Species:	Human
Expression Host:	HEK293
Expression cDNA Clone or AA Sequence:	RC207282
Predicted MW:	34.5 kDa
Protein Sequence:	>RC207282 protein sequence Red=Cloning site Green=Tags(s) MASRCSEPYPEVSRIPTRVRCNGSLSGALSCCEDSAQGSPPKAPTVAEGPSSCLRRNVISERERRKRMS LSCERLRALLPQFDGRREDMASVLEMSVQFLRLASALGPSQEQHAILASSKEMWHSQEDVQLTLSSQI QAGVPDPGTGASSGTRTPDVKAFLESPWLDPASASPEPVPHILASSRQWDPASCTSLGTDKCEALLGLC QVRGGLPPFSEPSLVPPGRSLPKAVRPPPLSWPPFSQQQTLPVMSGEALGWLQAGSLAMGAAPLGEP AKEDPMLAQEAGSALGSDVDDGTSFLLTAGPSSWPGEWGPGFRAGPPA TRTRPLEQKLISEEDLAANDILDYKDDDDKV
Tag:	C-Myc/DDK
Purity:	> 80% as determined by SDS-PAGE and Coomassie blue staining
Concentration:	>0.05 µg/µL as determined by microplate BCA method
Labeling Method:	Labeled with [U- ¹³ C ₆ , ¹⁵ N ₄]-L-Arginine and [U- ¹³ C ₆ , ¹⁵ N ₂]-L-Lysine
Buffer:	25 mM Tris-HCl, 100 mM glycine, pH 7.3
Storage:	Store at -80°C. Avoid repeated freeze-thaw cycles.
Stability:	Stable for 3 months from receipt of products under proper storage and handling conditions.
RefSeq:	NP_001012415
RefSeq Size:	1997
RefSeq ORF:	984
Synonyms:	bA100C15.3; bHLHe80; C9orf157; NOHLH; ODG5; SPATA27; SPGF32; TEB2
Locus ID:	402381



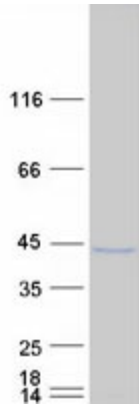
[View online »](#)

UniProt ID: [Q5JUK2](#)

Cytogenetics: 9q34.3

Summary: This gene encodes one of testis-specific transcription factors which are essential for spermatogenesis, oogenesis and folliculogenesis. This gene is located on chromosome 9. Mutations in this gene are associated with nonobstructive azoospermia. Alternatively spliced transcript variants encoding different isoforms have been found for this gene. [provided by RefSeq, Aug 2013]

Product images:



Coomassie blue staining of purified SOHLH1 protein (Cat# [TP307282]). The protein was produced from HEK293T cells transfected with SOHLH1 cDNA clone (Cat# [RC207282]) using MegaTran 2.0 (Cat# [TT210002]).