

Product datasheet for PH307243

TMEM188 (CNEP1R1) (NM_153261) Human Mass Spec Standard

Product data:

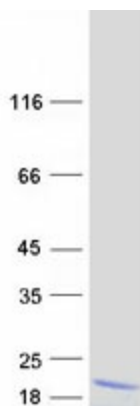
Product Type:	Mass Spec Standards
Description:	TMEM188 MS Standard C13 and N15-labeled recombinant protein (NP_694993)
Species:	Human
Expression Host:	HEK293
Expression cDNA Clone or AA Sequence:	RC207243
Predicted MW:	16 kDa
Protein Sequence:	<p>>RC207243 protein sequence</p> <p>Red=Cloning site Green=Tags(s)</p> <p>MNSLEQAEAPRVSLIPAVVSGNCQDLKAFERRLTEYIHCLQPATGRWRMLLIVVSVCTATGAWNWLIDP ETQKVSFFTSLWNHPFFTISCITLIGLFFAGIHKRVVAPSIIAARCRTVLAEYNMSCDDTGKLILKPRPH VQ</p> <p>TRTRPLEQKLISEEDLAANDILDYKDDDDKV</p>
Tag:	C-Myc/DDK
Purity:	> 80% as determined by SDS-PAGE and Coomassie blue staining
Concentration:	>0.05 µg/µL as determined by microplate BCA method
Labeling Method:	Labeled with [U- 13C6, 15N4]-L-Arginine and [U- 13C6, 15N2]-L-Lysine
Buffer:	25 mM Tris-HCl, 100 mM glycine, pH 7.3
Storage:	Store at -80°C. Avoid repeated freeze-thaw cycles.
Stability:	Stable for 3 months from receipt of products under proper storage and handling conditions.
RefSeq:	<u>NP_694993</u>
RefSeq Size:	2201
RefSeq ORF:	426
Synonyms:	C16orf69; NEP1-R1; NEP1R1; TMEM188; TMP125
Locus ID:	255919
UniProt ID:	<u>Q8N9A8</u>


[View online »](#)

Cytogenetics: 16q12.1

Summary: This gene encodes a transmembrane protein that belongs to the Tmemb_18A family. A similar protein in yeast is a component of an endoplasmic reticulum-associated protein phosphatase complex and is thought to play a role in the synthesis of triacylglycerol. Alternate splicing results in multiple transcript variants. [provided by RefSeq, Aug 2013]

Product images:



Coomassie blue staining of purified CNEP1R1 protein (Cat# [TP307243]). The protein was produced from HEK293T cells transfected with CNEP1R1 cDNA clone (Cat# [RC207243]) using MegaTran 2.0 (Cat# [TT210002]).