

Product datasheet for PH307238

LYRIC (MTDH) (NM_178812) Human Mass Spec Standard

Product data:

Product Type:	Mass Spec Standards
Description:	MTDH MS Standard C13 and N15-labeled recombinant protein (NP_848927)
Species:	Human
Expression Host:	HEK293
Expression cDNA Clone or AA Sequence:	RC207238
Predicted MW:	63.8 kDa
Protein Sequence:	>RC207238 protein sequence Red=Cloning site Green=Tags(s)

MAARSWQDELAQQAEEGSARLREMLSVGLGFLRTELGLDLGLEPKRYPGWVILVGTGALGLLLLFLLYG
WAAACAGSRKKRRSPRKRREEAAAVPAAAPDDLALLKNLRSEEQKKNRKKLSEKPKPNGRTVEVAEGEA
VRTPQSVTAKQPPEIDKKNEKSKNKKKSKSDAKAVQNSSRHDGKEVDEGAWETKISHREKRQQRKRDV
LTDGSLDSTIPGIENITVTTEQLTTASFPVGSKKNKGDSHLNVQVSNFKSGKGDSTLQVSSGLNENLT
VNGGGWNEKSVKLSSQISAGEEKWNSVSPASAGKRKAEPSAWSQDTGDANTNGKDWGRSWSDRSIFSGIG
STAEPVSQSTTSQYQWDVSRNQPYIDDEWSGLNGLSSADPNSDWNAPAEWGNWVDEERASLLKSQEP
DDQKVSDDDKEKGEALPTGSKKKKKKKKQGEDNSTAQDTEELEKEIREDLPVNTSKTRPKQEKAFSL
KTIISTSDPAEVLVKNSQPIKTLPPATSTEPSVILSKSDSDKSSSQVPPILQETDKSKSNTKQNSVPPSQ
KSETSWESPKQIKKKKKARRET

TRTRPLEQKLISEEDLAANDILDYKDDDDKV

Tag:	C-Myc/DDK
Purity:	> 80% as determined by SDS-PAGE and Coomassie blue staining
Concentration:	>0.05 µg/µL as determined by microplate BCA method
Labeling Method:	Labeled with [U- ¹³ C ₆ , ¹⁵ N ₄]-L-Arginine and [U- ¹³ C ₆ , ¹⁵ N ₂]-L-Lysine
Buffer:	25 mM Tris-HCl, 100 mM glycine, pH 7.3
Storage:	Store at -80°C. Avoid repeated freeze-thaw cycles.
Stability:	Stable for 3 months from receipt of products under proper storage and handling conditions.
RefSeq:	NP_848927
RefSeq Size:	7667
RefSeq ORF:	1746



[View online »](#)

Synonyms: 3D3; AEG-1; AEG1; LYRIC; LYRIC/3D3

Locus ID: 92140

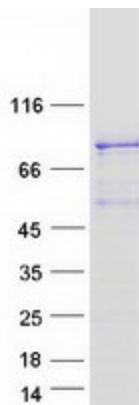
UniProt ID: [Q86UE4](#), [A0A024R9D2](#)

Cytogenetics: 8q22.1

Summary: Downregulates SLC1A2/EAAT2 promoter activity when expressed ectopically. Activates the nuclear factor kappa-B (NF-kappa-B) transcription factor. Promotes anchorage-independent growth of immortalized melanocytes and astrocytes which is a key component in tumor cell expansion. Promotes lung metastasis and also has an effect on bone and brain metastasis, possibly by enhancing the seeding of tumor cells to the target organ endothelium. Induces chemoresistance.[UniProtKB/Swiss-Prot Function]

Protein Families: Transmembrane

Product images:



Coomassie blue staining of purified MTDH protein (Cat# [TP307238]). The protein was produced from HEK293T cells transfected with MTDH cDNA clone (Cat# [RC207238]) using MegaTran 2.0 (Cat# [TT210002]).