

Product datasheet for PH307225

GFPT1 (NM_002056) Human Mass Spec Standard

Product data:

Product Type:	Mass Spec Standards
Description:	GFPT1 MS Standard C13 and N15-labeled recombinant protein (NP_002047)
Species:	Human
Expression Host:	HEK293
Expression cDNA Clone or AA Sequence:	RC207225
Predicted MW:	76.6 kDa
Protein Sequence:	>RC207225 representing NM_002056 Red=Cloning site Green=Tags(s)

MCGIFAYLNYHVPRTREILETLIKGLQRLEYRGYDSAGVGFDDGNDKDWEANACKIQLIKKKGKVKALD
EEVHKQQDMDLDIEFDVHLGIAHTRWATHGEPSPVNSHPQRSKNNFIVIHNGIITNYKDLKFFLESKG
YDFESETDTETIAKLVKMYDNRESQDTSFTTLVERVIQQLEGAFAVFKSVHFPQAVGTRRGSPLLI
VRSEHKLSTDHIPILYRTGKDKKGCNLSRVSTTCLFPVEEKAVEEYFASDASAVIEHTNRVIFLEDD
VAAVVDGRLSIHRIKRTAGDHPGRAVQTLQMEQQIMKGNFSSFQKEIFEQPSVVNTMRGRVNFDDYT
VNLGGLKDHIKEIQRCLLILACGTSYHAGVATROVLEELTELPVMVELASDFLDRNTPVFRDDVCFLL
SQSGETADTLMGLRYCKERGALTVGITNTVGSSISRETDCGVHINAGPEIGVASTKAYTSQFVSLVMFAL
MMCDRISMQRKEIMLGLKRLPDLIKEVLSMDDEIQKLATELYHQKSVLIMGRGYHYATCLEGALKIK
EITYMHSEGILAGELKHGPLALVDKLMPIVIMIMRDHTYAKCQNALQQVVARQGRPVVICDKEDTETIKN
TKRTIKVPHSVDCLOGILSVIPLQLLAFHLAVLRGYDVFPRNLAKSVTVE

TRTRPLEQKLISEEDLAANDILDYKDDDDKV

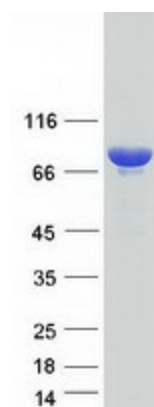
Tag:	C-Myc/DDK
Purity:	> 80% as determined by SDS-PAGE and Coomassie blue staining
Concentration:	>0.05 µg/µL as determined by microplate BCA method
Labeling Method:	Labeled with [U- ¹³ C ₆ , ¹⁵ N ₄]-L-Arginine and [U- ¹³ C ₆ , ¹⁵ N ₂]-L-Lysine
Buffer:	25 mM Tris-HCl, 100 mM glycine, pH 7.3
Storage:	Store at -80°C. Avoid repeated freeze-thaw cycles.
Stability:	Stable for 3 months from receipt of products under proper storage and handling conditions.
RefSeq:	NP_002047
RefSeq Size:	3082



[View online »](#)

RefSeq ORF:	2043
Synonyms:	CMS12; CMSTA1; GFA; GFAT; GFAT 1; GFAT1; GFAT1m; GFPT; GFPT1L; MSLG
Locus ID:	2673
UniProt ID:	Q06210
Cytogenetics:	2p13.3
Summary:	This gene encodes the first and rate-limiting enzyme of the hexosamine pathway and controls the flux of glucose into the hexosamine pathway. The product of this gene catalyzes the formation of glucosamine 6-phosphate. [provided by RefSeq, Sep 2008]
Protein Families:	Protease
Protein Pathways:	Alanine, aspartate and glutamate metabolism, Amino sugar and nucleotide sugar metabolism, Metabolic pathways

Product images:



Coomassie blue staining of purified GFPT1 protein (Cat# [TP307225]). The protein was produced from HEK293T cells transfected with GFPT1 cDNA clone (Cat# [RC207225]) using MegaTran 2.0 (Cat# [TT210002]).