

Product datasheet for PH307224

GCLM (NM_002061) Human Mass Spec Standard

Product data:

Product Type:	Mass Spec Standards
Description:	GCLM MS Standard C13 and N15-labeled recombinant protein (NP_002052)
Species:	Human
Expression Host:	HEK293
Expression cDNA Clone or AA Sequence:	RC207224
Predicted MW:	30.7 kDa
Protein Sequence:	>RC207224 protein sequence Red =Cloning site Green =Tags(s)

MGTDSSRAAKALLARARTLHLQTGNLLNWGRLRKKCPSTHSEELHDCIQKTLNEWSSQINPDLVREFPDVL
 ECTVSHAVEKINPDEREEMKVS AKLFIVESNSSSTRSAVDMACSVLGVAQLDSVIIASPPIEDGVNLSL
 EHLQPYWEELENLVQSKKIVAIGTSDLKTQLEQLYQWAQVKPNSNQVNLASCCVMPDALTAFKQFDIQ
 LLTHNDPKELLSEASFQEALQESIPDIQAHEWVPLWLLRYSVIVKSRGIKSKGYILQAKRRGS

TRTRPLEQKLISEEDLAANDILDYKDDDDKV

Tag:	C-Myc/DDK
Purity:	> 80% as determined by SDS-PAGE and Coomassie blue staining
Concentration:	>0.05 µg/µL as determined by microplate BCA method
Labeling Method:	Labeled with [U- ¹³ C ₆ , ¹⁵ N ₄]-L-Arginine and [U- ¹³ C ₆ , ¹⁵ N ₂]-L-Lysine
Buffer:	25 mM Tris-HCl, 100 mM glycine, pH 7.3
Storage:	Store at -80°C. Avoid repeated freeze-thaw cycles.
Stability:	Stable for 3 months from receipt of products under proper storage and handling conditions.
RefSeq:	<u>NP_002052</u>
RefSeq Size:	3074
RefSeq ORF:	822
Synonyms:	GLCLR
Locus ID:	2730
UniProt ID:	<u>P48507</u>


[View online »](#)

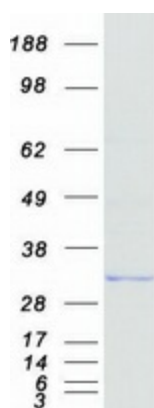
Cytogenetics: 1p22.1

Summary: Glutamate-cysteine ligase, also known as gamma-glutamylcysteine synthetase, is the first rate limiting enzyme of glutathione synthesis. The enzyme consists of two subunits, a heavy catalytic subunit and a light regulatory subunit. Gamma glutamylcysteine synthetase deficiency has been implicated in some forms of hemolytic anemia. Alternative splicing results in multiple transcript variants encoding different isoforms. [provided by RefSeq, Apr 2015]

Protein Families: Druggable Genome

Protein Pathways: Glutathione metabolism, Metabolic pathways

Product images:



Coomassie blue staining of purified GCLM protein (Cat# [TP307224]). The protein was produced from HEK293T cells transfected with GCLM cDNA clone (Cat# [RC207224]) using MegaTran 2.0 (Cat# [TT210002]).