

Product datasheet for PH307141

LRWD1 (NM_152892) Human Mass Spec Standard

Product data:

| | |
|---------------------------------------|---|
| Product Type: | Mass Spec Standards |
| Description: | LRWD1 MS Standard C13 and N15-labeled recombinant protein (NP_690852) |
| Species: | Human |
| Expression Host: | HEK293 |
| Expression cDNA Clone or AA Sequence: | RC207141 |
| Predicted MW: | 70.9 kDa |
| Protein Sequence: | >RC207141 protein sequence Red=Cloning site Green=Tags(s) |

MGPLSARLLMQRGRPKSDRLGKIRSLDLSGLELLSEHLDPKLLCRLTQLQELDLNNHLETLPDNLGLSH
LRVLRANNQLGDVTALCQFPKLEELSLEGNPFLTVNDNLKVSFLLPTLRKVNGKDASSTYSQVENLNRE
LTSRVTAHWEKFMATLGPEEEAEKAQADFVKSAVRDVRYGPESLSEFTQWRVIRMISEELVAASRTQVQKA
NSPEKPPEAGAAHKPRARLAALKRPDDVPLSLSPSKRACASPSAQVEGSPVAGSDGSQPAVKLEPLHFLQ
CHSKNNSPQDLETQLWACAFEPAAWEEGATSQTVATCGGEAVCVIDCQTGIVLHKYKAPGEEFFSVAWTAL
MVVTQAGHKRWSVLAAGLRGLVRLHVRAGFCGVIKRAHKKAIATLCFSPAETHLFTASYDKRIILW
DIGVNPQDYEFQASQLLTLDTTSLPLRLCPVASCPCDARLLAGCEGGCCWVRLDQPPQKRRVCEVEFVFS
EGSEASGRVDGLAFVNEDIVASKGSLGTICLWSWRQTWGGGSGSTVAVVVLARLQWSSTELAYFSL
ACPDKGIVLCGDEEGNVWLYDVSNIKQPPLPAALQAPTQILKWPQPWALGQVVTKTMVNTVVANASFT
YLTALTDNSNIVAIWGRM

TRTRPLEQKLISEEDLAANDILDYKDDDDKV

| | |
|------------------|--|
| Tag: | C-Myc/DDK |
| Purity: | > 80% as determined by SDS-PAGE and Coomassie blue staining |
| Concentration: | >0.05 µg/µL as determined by microplate BCA method |
| Labeling Method: | Labeled with [U- 13C6, 15N4]-L-Arginine and [U- 13C6, 15N2]-L-Lysine |
| Buffer: | 25 mM Tris-HCl, 100 mM glycine, pH 7.3 |
| Storage: | Store at -80°C. Avoid repeated freeze-thaw cycles. |
| Stability: | Stable for 3 months from receipt of products under proper storage and handling conditions. |
| RefSeq: | NP_690852 |
| RefSeq Size: | 2220 |



[View online »](#)

RefSeq ORF: 1941

Synonyms: CENP-33; ORCA

Locus ID: 222229

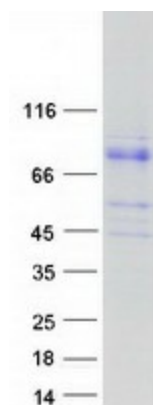
UniProt ID: [Q9UFC0](#), [A0A140VJD0](#)

Cytogenetics: 7q22.1

Summary: The protein encoded by this gene interacts with components of the origin recognition complex (ORC) and regulates the formation of the prereplicative complex. The encoded protein stabilizes the ORC and therefore aids in DNA replication. This protein is required for the G1/S phase transition of the cell cycle. In addition, the encoded protein binds to trimethylated histone H3 in heterochromatin and recruits the ORC and lysine methyltransferases, which help maintain the repressive heterochromatic state. Two transcript variants encoding different isoforms have been found for this gene. [provided by RefSeq, Dec 2015]

Protein Families: Druggable Genome

Product images:



Coomassie blue staining of purified LRWD1 protein (Cat# [TP307141]). The protein was produced from HEK293T cells transfected with LRWD1 cDNA clone (Cat# [RC207141]) using MegaTran 2.0 (Cat# [TT210002]).