

## Product datasheet for PH307133

### Myotrophin (MTPN) (NM\_145808) Human Mass Spec Standard

#### Product data:

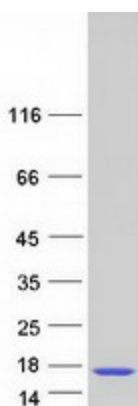
Product Type:	Mass Spec Standards
Description:	MTPN MS Standard C13 and N15-labeled recombinant protein (NP_665807)
Species:	Human
Expression Host:	HEK293
Expression cDNA Clone or AA Sequence:	RC207133
Predicted MW:	12.9 kDa
Protein Sequence:	>RC207133 protein sequence Red=Cloning site Green=Tags(s)  MCDKEFMWALKNGDLDEVKDYVAKGEDVNRTLEGRKPLHYAADCGQLEILEFLLKGDINAPDKHHIT PLLSAVYEGHVSCVKLLLSKGADKTVKGPDGLTAFEATDNQAIKALLQ  SGPTRTRPLEQKLI SEEDLAANDILDYKDDDDKV
Tag:	C-Myc/DDK
Purity:	> 80% as determined by SDS-PAGE and Coomassie blue staining
Concentration:	>0.05 µg/µL as determined by microplate BCA method
Labeling Method:	Labeled with [U- 13C6, 15N4]-L-Arginine and [U- 13C6, 15N2]-L-Lysine
Buffer:	25 mM Tris-HCl, 100 mM glycine, pH 7.3
Storage:	Store at -80°C. Avoid repeated freeze-thaw cycles.
Stability:	Stable for 3 months from receipt of products under proper storage and handling conditions.
RefSeq:	<a href="#">NP_665807</a>
RefSeq Size:	3900
RefSeq ORF:	354
Synonyms:	GCDP; V-1
Locus ID:	136319
UniProt ID:	<a href="#">P58546</a> , <a href="#">Q69YG1</a>
Cytogenetics:	7q33



[View online »](#)

**Summary:**

The transcript produced from this gene is bi-cistronic and can encode both myotrophin and leucine zipper protein 6. The myotrophin protein is associated with cardiac hypertrophy, where it is involved in the conversion of NFkappa B p50-p65 heterodimers to p50-p50 and p65-p65 homodimers. This protein also has a potential function in cerebellar morphogenesis, and it may be involved in the differentiation of cerebellar neurons, particularly of granule cells. A cryptic ORF at the 3' end of this transcript uses a novel internal ribosome entry site and a non-AUG translation initiation codon to produce leucine zipper protein 6, a 6.4 kDa tumor antigen that is associated with myeloproliferative disease. [provided by RefSeq, Jul 2008]

**Product images:**

Coomassie blue staining of purified MTPN protein (Cat# [TP307133]). The protein was produced from HEK293T cells transfected with MTPN cDNA clone (Cat# [RC207133]) using MegaTran 2.0 (Cat# [TT210002]).