

Product datasheet for PH307109

CSRP1 (NM_004078) Human Mass Spec Standard

Product data:

Product Type:	Mass Spec Standards
Description:	CSRP1 MS Standard C13 and N15-labeled recombinant protein (NP_004069)
Species:	Human
Expression Host:	HEK293
Expression cDNA Clone or AA Sequence:	RC207109
Predicted MW:	20.6 kDa
Protein Sequence:	>RC207109 protein sequence Red=Cloning site Green=Tags(s) MPNWGGGKKCGVCQKTVYFAEEVQCEGNSFHKSCFLCMVCKKNLDSTTVAVHGEEIYCKSCYGKKGPKG YGYGQGAGTLSTDKGESLGIKHEEAPGHRPTTNPASKFAQKIGGSERCPRCSQAVYAAEKVIGAGKSWH KACFRCAKCGKGLESTTLADKDGEIYCKGKYAKNFGPKGFGFGQGAGALVHSE TRTRPLEQKLI SEEDLAANDILDYKDDDDKV
Tag:	C-Myc/DDK
Purity:	> 80% as determined by SDS-PAGE and Coomassie blue staining
Concentration:	>0.05 µg/µL as determined by microplate BCA method
Labeling Method:	Labeled with [U- 13C6, 15N4]-L-Arginine and [U- 13C6, 15N2]-L-Lysine
Buffer:	25 mM Tris-HCl, 100 mM glycine, pH 7.3
Storage:	Store at -80°C. Avoid repeated freeze-thaw cycles.
Stability:	Stable for 3 months from receipt of products under proper storage and handling conditions.
RefSeq:	NP_004069
RefSeq Size:	1970
RefSeq ORF:	579
Synonyms:	CRP; CRP1; CSRP; CYRP; D1S181E; HEL-141; HEL-S-286
Locus ID:	1465
UniProt ID:	P21291 , A0A384P5K2

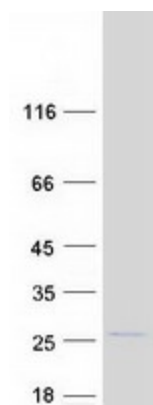


[View online »](#)

Cytogenetics: 1q32.1

Summary: This gene encodes a member of the cysteine-rich protein (CSRP) family. This gene family includes a group of LIM domain proteins, which may be involved in regulatory processes important for development and cellular differentiation. The LIM/double zinc-finger motif found in this gene product occurs in proteins with critical functions in gene regulation, cell growth, and somatic differentiation. Alternatively spliced transcript variants have been described. [provided by RefSeq, Aug 2010]

Product images:



Coomassie blue staining of purified CSRP1 protein (Cat# [TP307109]). The protein was produced from HEK293T cells transfected with CSRP1 cDNA clone (Cat# [RC207109]) using MegaTran 2.0 (Cat# [TT210002]).