

Product datasheet for PH307101

CSDE1 (NM_007158) Human Mass Spec Standard

Product data:

Product Type:	Mass Spec Standards
Description:	CSDE1 MS Standard C13 and N15-labeled recombinant protein (NP_009089)
Species:	Human
Expression Host:	HEK293
Expression cDNA Clone or AA Sequence:	RC207101
Predicted MW:	85.7 kDa
Protein Sequence:	>RC207101 protein sequence Red=Cloning site Green=Tags(s)

MSFDPNLLHNNHNGYPNGTSAALRETGVIEKLLTSYGF IQCSERQARLFFHCSQYNGNLQDLKVGDDVE
FEVSSDRRTGKPIAVKLVKIKQEILPEERMNGQEVFYL TYTPEDVEGNVQLETGDKINFVIDNNKHTGAV
SARNIMLLKKKQARCGVVCAMKEAFGF IERGDVVKEIFFHYSEFKGDLETLQPGDDVEFTIKDRNGKEV
ATDVRLLPQGTVIFEDISIEHFEGTVTKVIPKVPKSNQNDPLPGRKIVDFVIPKELPFGDKDTKSKVTLL
EGDHVRFNISTDRDKLERATNIEVL SNTFQFTNEAREMGVIAAMRDGFGF IKCVDRDVRMFFHFSEILD
GNQLHIADVEFVTPDML SAQRNHAIRIKKLPKGTVSFHSKSDHRFLGTVEKEATFSNPKTTSPNKGKE
KEAEDGIIAYDDCGVKL TIAFAQKDVEGSTSPQIGDKVEFSISDKQRPGQVATCVRLGRNSNSKRLLG
YVATLKDNFGFIETANHDKEIFFHYSEFGDVSLELGMVEYSLSKGKGNKVS AEKVNKTHSVNGITEE
ADPTIYSGKVIRPLRSVDPTQTEYQGMIEIVEEGDMKGEVYYPFGIVGMANKGDCLQKGESVKFQLCVLGG
NAQTMAYNITPLRRATVECVKDFGF INYEVGDSKCLFFHVKEVQDGIELQAGDEVEFSVILNQRGKCS
ACNVWRVCEGPKAVAAPRPDRLVNRLKNITLDDASAPRLMVLRRQPRGPDNSMGFGAERKIRQAGVID

TRTRPLEQKLISEEDLAANDILDYKDDDDKV

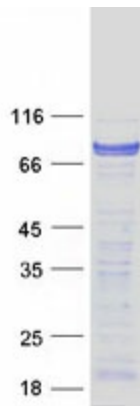
Tag:	C-Myc/DDK
Purity:	> 80% as determined by SDS-PAGE and Coomassie blue staining
Concentration:	>0.05 µg/µL as determined by microplate BCA method
Labeling Method:	Labeled with [U- 13C6, 15N4]-L-Arginine and [U- 13C6, 15N2]-L-Lysine
Buffer:	25 mM Tris-HCl, 100 mM glycine, pH 7.3
Storage:	Store at -80°C. Avoid repeated freeze-thaw cycles.
Stability:	Stable for 3 months from receipt of products under proper storage and handling conditions.
RefSeq:	NP_009089



[View online »](#)

RefSeq Size:	4090
RefSeq ORF:	2301
Synonyms:	D1S155E; UNR
Locus ID:	7812
UniProt ID:	O75534 , A0A024R0K2
Cytogenetics:	1p13.2
Summary:	RNA-binding protein. Required for internal initiation of translation of human rhinovirus RNA. May be involved in translationally coupled mRNA turnover. Implicated with other RNA-binding proteins in the cytoplasmic deadenylation/translational and decay interplay of the FOS mRNA mediated by the major coding-region determinant of instability (mCRD) domain. [UniProtKB/Swiss-Prot Function]
Protein Families:	Transcription Factors

Product images:



Coomassie blue staining of purified CSDE1 protein (Cat# [TP307101]). The protein was produced from HEK293T cells transfected with CSDE1 cDNA clone (Cat# [RC207101]) using MegaTran 2.0 (Cat# [TT210002]).