

Product datasheet for PH307099

Epsin 1 (EPN1) (NM_013333) Human Mass Spec Standard

Product data:

Product Type:	Mass Spec Standards
Description:	EPN1 MS Standard C13 and N15-labeled recombinant protein (NP_037465)
Species:	Human
Expression Host:	HEK293
Expression cDNA Clone or AA Sequence:	RC207099
Predicted MW:	57.3 kDa
Protein Sequence:	>RC207099 representing NM_013333 Red=Cloning site Green=Tags(s)

MSTSSLRRQMKNI VHNYSEAEIKVREATSNDPWGPSSSLMSEIADLTYNVVFSEIMSMIWKRLNDHGKN
WRHVYKAMTLM EYLIKTSERVSQQCKENMYAVQTLKDFQYVDRDGKDQGVNVREKAKQLVALLRDEDRL
REERAHALKTK EKLAQTATASSA AVSGPPPEAEQAWPQSSGEEELQLQLALAMSKEEADQEERIRRGDD
LRLQMAIEESKRETTGGKEESSLMDLADVFTAPAPAPTTDPWGGPAPMAAAVPTAAPTSDPWGGPPVPPAA
DPWGGPAPTPASGDPWRPAAPAGPSVDPWGGTPAPAAGEGPTDPWGSDDGGVPVSGPSASDPWTPAPAF
SDPWGGSPAKPSTNGTTAGGFDTEPDEF SDFDRLRTALPTSGSSAGELELLAGEVPARSPGAFDMSGVRG
SLAEAVGSPPPAATPTPTPPTRKTPESFLGPNAAVLDSLVSRRPGTPPGAKASNPFLPGGGPATGPSV
TNPFQAPPATLTLNQLRLSPVPPVPGAPPTYISPLGGGGLPPMPPGPPAPNTNPFLL

TRTRPLEQKLI SEEDLAANDILDYKDDDDKV

Tag:	C-Myc/DDK
Purity:	> 80% as determined by SDS-PAGE and Coomassie blue staining
Concentration:	>0.05 µg/µL as determined by microplate BCA method
Labeling Method:	Labeled with [U- ¹³ C ₆ , ¹⁵ N ₄]-L-Arginine and [U- ¹³ C ₆ , ¹⁵ N ₂]-L-Lysine
Buffer:	25 mM Tris-HCl, 100 mM glycine, pH 7.3
Storage:	Store at -80°C. Avoid repeated freeze-thaw cycles.
Stability:	Stable for 3 months from receipt of products under proper storage and handling conditions.
RefSeq:	NP_037465
RefSeq Size:	2430
RefSeq ORF:	1650



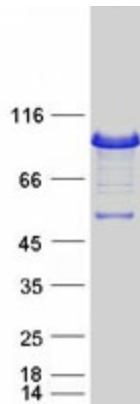
[View online »](#)

Locus ID: 29924
UniProt ID: [Q9Y6I3](#)
Cytogenetics: 19q13.42

Summary: This gene encodes a member of the epsin protein family. The encoded protein binds clathrin and is involved in the endocytosis of clathrin-coated vesicles. Loss of function of this gene is associated with reduced tumor growth and progression in certain cancer types. [provided by RefSeq, Mar 2016]

Protein Pathways: Endocytosis

Product images:



Coomassie blue staining of purified EPN1 protein (Cat# [TP307099]). The protein was produced from HEK293T cells transfected with EPN1 cDNA clone (Cat# [RC207099]) using MegaTran 2.0 (Cat# [TT210002]).