

Product datasheet for PH307083

FLAD1 (NM_201398) Human Mass Spec Standard

Product data:

Product Type:	Mass Spec Standards
Description:	FLAD1 MS Standard C13 and N15-labeled recombinant protein (NP_958800)
Species:	Human
Expression Host:	HEK293
Expression cDNA Clone or AA Sequence:	RC207083
Predicted MW:	54.2 kDa
Protein Sequence:	>RC207083 protein sequence Red=Cloning site Green=Tags(s)

MTSRASELSPGRSVTAGIIVGDEILKGHTQDTNTFFLCRTLRLSLGVQVCRVSVVPDEVATIAAEVTSFS
NRFTHVLTAGGIGPTHDDVTFEAVAQAFGDELKPHPKLEAATKALGGEGWEKLSLVPSSARLHYGTDPC
GQPFRRPLVSVRNYYLFPGIPELLRRVLEGMKGLFQNPVQVQFHSKELYVADEASIAPIIAEAQAHFGR
LGLGSYPDWGSNYYQVKLTLDSEEEGLEECLAYLTARLPQGSVPYMPNAVEQASEAVYKLAESGSSLG
KKVAGALQTIETSLAQYSLTQLCVGFNGGKDCTALLHLFHAHVQRKLPDVPNPLQILYIRSI SPFPELEQ
FLQDTIKRYNLQMLEAEGSMKQALGELQARHPQLEAVLMGTRRTDPYSCSLCPFSPDPGWPAFMRINPL
LDWYRDIWDFLRQLFVPCILYDRGYTSLGSRNTVRNPALKCLSPGGHPTYPAYLLENEEEERNST

TRTRPLEQKLI SEEDLAANDILDYKDDDDKV

Tag:	C-Myc/DDK
Purity:	> 80% as determined by SDS-PAGE and Coomassie blue staining
Concentration:	>0.05 µg/µL as determined by microplate BCA method
Labeling Method:	Labeled with [U- ¹³ C ₆ , ¹⁵ N ₄]-L-Arginine and [U- ¹³ C ₆ , ¹⁵ N ₂]-L-Lysine
Buffer:	25 mM Tris-HCl, 100 mM glycine, pH 7.3
Storage:	Store at -80°C. Avoid repeated freeze-thaw cycles.
Stability:	Stable for 3 months from receipt of products under proper storage and handling conditions.
RefSeq:	<u>NP_958800</u>
RefSeq Size:	1816
RefSeq ORF:	1470
Synonyms:	FAD1; FADS; LSMFLAD; PP591



[View online »](#)

Locus ID: 80308

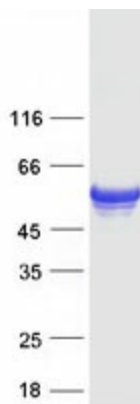
UniProt ID: [Q8NFF5](#)

Cytogenetics: 1q21.3

Summary: This gene encodes the enzyme that catalyzes adenylation of flavin mononucleotide (FMN) to form flavin adenine dinucleotide (FAD) coenzyme. Alternatively spliced transcript variants encoding distinct isoforms have been observed. [provided by RefSeq, Jul 2008]

Protein Pathways: Metabolic pathways, Riboflavin metabolism

Product images:



Coomassie blue staining of purified FLAD1 protein (Cat# [TP307083]). The protein was produced from HEK293T cells transfected with FLAD1 cDNA clone (Cat# [RC207083]) using MegaTran 2.0 (Cat# [TT210002]).