

## Product datasheet for PH307082

### NAT10 (NM\_024662) Human Mass Spec Standard

#### Product data:

Product Type:	Mass Spec Standards
Description:	NAT10 MS Standard C13 and N15-labeled recombinant protein (NP_078938)
Species:	Human
Expression Host:	HEK293
Expression cDNA Clone or AA Sequence:	RC207082
Predicted MW:	115.7 kDa
Protein Sequence:	>RC207082 protein sequence <span style="color: red;">Red</span> =Cloning site <span style="color: green;">Green</span> =Tags(s)

MHRKKVDNRIRILIENGVAERQSRSLFVVVGDRGKDQVVILHHMLSKATVKARPSVLWCYKKELGFSSHRK  
 KMRQLQKKIKNGTLNIKQDDPFELFIAATNIRYCYYNETHKILGNTFGMCVLQDFEALTPNLLARTVET  
 VEGGGLVVILLRTMNSLKQLYTVTMDVHSRYRTEAHQDVVGRFNERFILSLASCKKCLVIDDQLNILPIS  
 SHVATMEALPPQTPDESLGPSDELRELKESLQDTQPVGVLVDCCKTLDQAKAVLKFIGEISEKTLRSTV  
 ALTAARGRGKSAALGLAIAGAVAFGYSNIFVTSPSPDNLHTLFEFVFKGFDALQYQEHLDYEIIQSLNPE  
 FNKAVIRVNVFREHRQTIQYIHPADAVKLGOAELVVIDEAAAIPLPLVKSLLGPYLVFMASTINGYEGTG  
 RSLSLKLIQQLRQSAQSQVSTTAENKTTTARLASARTLHEVSLQESIRYAPGDAVEKWLNDLLCLDCL  
 NITRIVSGCPLPEACELYYVNRDTLFCYHKASEVFLQRLMALYVASHYKNPNDLQMLSDAPAHHLFCLL  
 PPVPPTQNALPEVLAVIQVCLEGEISRQSIILNSLSRGKKASGDLIPWTVSEQFQDPDFGGLSGGRVRIA  
 VHPDYQGMGYGSRALQLQMYEGRFPCLLEEKVLETPQEIHVSSEAVSLLLEEVITPRKDLPLLLKLNE  
 RPAERLDYLGVSYGLTPRLKFWKRAGFVPVYLRQTPNDLTGEHSCIMLKTLDDEADQGGWLAAFWKD  
 FRRRFLALLSYQFSTFSPSLALNIIQNRNMGKPAQPALSREELEALFLPYDLKREMYSRNMVDYHIMD  
 MIPAIISRIYFLNQLGDLALSAQSALLLGIGLQHKSVQLEKEIELPSGQLMGLFNRIIRKVVKL FNEVQ  
 EKAIEEQMVAAKDVVMEPTMKTLSDDLDEAAKEFQEKHKKEVGKLSMDLSEYIIRGDDEEWNEVLNKAG  
 PNASIIISLKSDDKKRLEAKQEPKQSKKLNRETKNKKDKMLKRKK

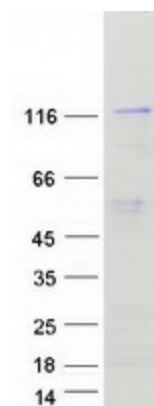
TRTRPLEQKLISEEDLAANDILDYKDDDDKV

Tag:	C-Myc/DDK
Purity:	> 80% as determined by SDS-PAGE and Coomassie blue staining
Concentration:	>0.05 µg/µL as determined by microplate BCA method
Labeling Method:	Labeled with [U- <sup>13</sup> C <sub>6</sub> , <sup>15</sup> N <sub>4</sub> ]-L-Arginine and [U- <sup>13</sup> C <sub>6</sub> , <sup>15</sup> N <sub>2</sub> ]-L-Lysine
Buffer:	25 mM Tris-HCl, 100 mM glycine, pH 7.3
Storage:	Store at -80°C. Avoid repeated freeze-thaw cycles.


[View online »](#)

<b>Stability:</b>	Stable for 3 months from receipt of products under proper storage and handling conditions.
<b>RefSeq:</b>	<u><a href="#">NP_078938</a></u>
<b>RefSeq Size:</b>	4058
<b>RefSeq ORF:</b>	3075
<b>Synonyms:</b>	ALP; Kre33; NET43
<b>Locus ID:</b>	55226
<b>UniProt ID:</b>	<u><a href="#">Q9H0A0</a></u>
<b>Cytogenetics:</b>	11p13
<b>Summary:</b>	The protein encoded by this gene is an RNA cytidine acetyltransferase involved in histone acetylation, tRNA acetylation, the biosynthesis of 18S rRNA, and the enhancement of nuclear architecture and chromatin organization. [provided by RefSeq, Oct 2016]

### Product images:



Coomassie blue staining of purified NAT10 protein (Cat# [TP307082]). The protein was produced from HEK293T cells transfected with NAT10 cDNA clone (Cat# [RC207082]) using MegaTran 2.0 (Cat# [TT210002]).