

Product datasheet for PH307071

PDP2 (NM_020786) Human Mass Spec Standard

Product data:

Product Type:	Mass Spec Standards
Description:	PDP2 MS Standard C13 and N15-labeled recombinant protein (NP_065837)
Species:	Human
Expression Host:	HEK293
Expression cDNA Clone or AA Sequence:	RC207071
Predicted MW:	60 kDa
Protein Sequence:	>RC207071 protein sequence Red=Cloning site Green=Tags(s)

MSSTVSYWILNSTRNSIATLQGGRRLYSRVSNRNKWKWRLF SRVPPTLNSSPCGGFTLCKAYRHTSTEE
DDFHLQLSPEQINEVLRAGETTHKILDLESVPNSVLRFSNQLAANSPVEDRRGVASCLQTNGLMFGIF
DGHGGHACAQAVSERLFYYVAVSLMSHTLEHMEGAMESMKPLLPILHWLKHGPGDSIYKDVTSVHLDHLR
VYWQELLDLHMEMGLSIEEALMYSFQRLDSDISLEIQAPLEDEVTRNLSLQVAFSGATACMAHVDGIHLH
VANAGDCRAILGVQEDNGMWSCLPLTRDHNAWNQAEL SRLKREHPESEDRTIIMEDRLLGVLIPCRAFGD
VQLKWSKELQRSILERGFNTEALNIYQF TPHYYPYTPPYL TAEPEVTYHRLRPQDKFLVLASDGLWMLSN
EDVVRLVVGHLAEADWHKTDLAQR PANLGLMQSLLLQRKASGLHEADQNAATRLIRHAIGNNEYGEMAE
RLAAMLTLPEDLARMYRDDITVTVVYFNSESIGAYYKGG

TRTRPLEQKLI SEEDLAANDILDYKDDDDKV

Tag:	C-Myc/DDK
Purity:	> 80% as determined by SDS-PAGE and Coomassie blue staining
Concentration:	>0.05 µg/µL as determined by microplate BCA method
Labeling Method:	Labeled with [U- ¹³ C ₆ , ¹⁵ N ₄]-L-Arginine and [U- ¹³ C ₆ , ¹⁵ N ₂]-L-Lysine
Buffer:	25 mM Tris-HCl, 100 mM glycine, pH 7.3
Storage:	Store at -80°C. Avoid repeated freeze-thaw cycles.
Stability:	Stable for 3 months from receipt of products under proper storage and handling conditions.
RefSeq:	<u>NP_065837</u>
RefSeq Size:	7042
RefSeq ORF:	1587



[View online »](#)

Synonyms: PDPC 2; PPM2B; PPM2C2

Locus ID: 57546

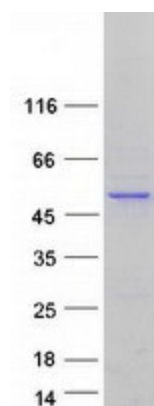
UniProt ID: [Q9P2J9](#)

Cytogenetics: 16q22.1

Summary: This gene is a mitochondrial protein that functions as a phosphatase and is involved in the enzymatic resetting of the pyruvate dehydrogenase complex. Alternative splicing results in multiple transcript variants encoding the same protein. [provided by RefSeq, Aug 2016]

Protein Families: Druggable Genome, Phosphatase

Product images:



Coomassie blue staining of purified PDP2 protein (Cat# [TP307071]). The protein was produced from HEK293T cells transfected with PDP2 cDNA clone (Cat# [RC207071]) using MegaTran 2.0 (Cat# [TT210002]).