

Product datasheet for PH307068

EFHB (NM_144715) Human Mass Spec Standard

Product data:

Product Type:	Mass Spec Standards
Description:	EFHB MS Standard C13 and N15-labeled recombinant protein (NP_653316)
Species:	Human
Expression Host:	HEK293
Expression cDNA Clone or AA Sequence:	RC207068
Predicted MW:	76.4 kDa
Protein Sequence:	>RC207068 protein sequence Red=Cloning site Green=Tags(s)

MEPRQEMEKESTCVLMKPNTTEIKLPVEVDIGLTQAEQPDTEKNTPEQMGLVIEPPQCQFAQQHEQRKEAG
NIESGVEPPDRIRPIYSGKFFDRTPCWPSAGKVI PVGYRVATCLTEKLPRLITPPEAKKYFNFRYPAGV
ERVFYGRANDPQIAPYLTHGIRSKISILANTLINPQPITTFQQKIKDKKESIYLSNRRAPLGKSHDQAPG
LPKGMINTTFTGTAVIKEYSAKD VVNPPKSYEEVFKEGNEGHDLVYVSHNDYYAGEAKNRKYNPSSFHR
CSVYGVPTPHFNDGRAMAKSLYWLHELQMKRGAKFVSKRADD FKEKFQHKLGRLVDPIAETMNVPPDCTF
GACLRPEEYGVGDLIHNRLPDEYLRGKDRQRALIAAVRHHLKKNVYQKFDTLAAFRHYDKKGDGMIDKD
ELQEACDQANLSLDDKLLDQLFDYCDVDNDGFINYLEFANFLNWKDKMLLKEYEERVI IIGRKPDCVNPT
EANVEEPEQTLLIKPEDIVLKEAGSTEKTLRLLRPSDKVSNYYKTTSSSEINAI VGAIPSTCYPICGVPT
IRSDIPAPRIRRI SDRNTYGEESAYSLLYPTIFARKGVFERDFFKTRSKEEIAEILCNIGVKLSDEEFE
NWNLASKKHHRGEVCVENIRNVLDL RHADRIKCKTLM

TRTRPLEQKLISEEDLAANDILDYKDDDDKV

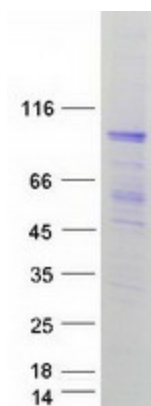
Tag:	C-Myc/DDK
Purity:	> 80% as determined by SDS-PAGE and Coomassie blue staining
Concentration:	>0.05 µg/µL as determined by microplate BCA method
Labeling Method:	Labeled with [U- 13C6, 15N4]-L-Arginine and [U- 13C6, 15N2]-L-Lysine
Buffer:	25 mM Tris-HCl, 100 mM glycine, pH 7.3
Storage:	Store at -80°C. Avoid repeated freeze-thaw cycles.
Stability:	Stable for 3 months from receipt of products under proper storage and handling conditions.
RefSeq:	NP_653316
RefSeq Size:	2857



[View online »](#)

RefSeq ORF:	2007
Synonyms:	CFAP21
Locus ID:	151651
UniProt ID:	Q8N7U6
Cytogenetics:	3p24.3
Summary:	Cytosolic sensor for calcium, modulates the interaction of STIM1 and ORAI1 upon store depletion, the activation of store-operated Ca(2+) entry (SOCE) and NFAT translocation from cytosol to nucleus.[UniProtKB/Swiss-Prot Function]

Product images:



Coomassie blue staining of purified EFHB protein (Cat# [TP307068]). The protein was produced from HEK293T cells transfected with EFHB cDNA clone (Cat# [RC207068]) using MegaTran 2.0 (Cat# [TT210002]).