

## Product datasheet for PH307053

### Galanin (GAL) (NM\_015973) Human Mass Spec Standard

#### Product data:

Product Type:	Mass Spec Standards
Description:	GAL MS Standard C13 and N15-labeled recombinant protein (NP_057057)
Species:	Human
Expression Host:	HEK293
Expression cDNA Clone or AA Sequence:	RC207053
Predicted MW:	13.3 kDa
Protein Sequence:	>RC207053 protein sequence Red=Cloning site Green=Tags(s)  MARGSALLLASLLAAALSASAGLWSPAKEKRGWTLNSAGYLLGPHAVGNHRFSKDKNGLTSKRELRPED DMKPGSFDRSIPENNIMRTIIEFLSFLHLKEAGALDRLLDLPAASSSEDIERS  TRTRPLEQKLISEEDLAANDILDYKDDDDKV
Tag:	C-Myc/DDK
Purity:	> 80% as determined by SDS-PAGE and Coomassie blue staining
Concentration:	>0.05 µg/µL as determined by microplate BCA method
Labeling Method:	Labeled with [U- 13C6, 15N4]-L-Arginine and [U- 13C6, 15N2]-L-Lysine
Buffer:	25 mM Tris-HCl, 100 mM glycine, pH 7.3
Storage:	Store at -80°C. Avoid repeated freeze-thaw cycles.
Stability:	Stable for 3 months from receipt of products under proper storage and handling conditions.
RefSeq:	<a href="#">NP_057057</a>
RefSeq Size:	778
RefSeq ORF:	369
Synonyms:	ETL8; GAL-GMAP; GALN; GLNN; GMAP
Locus ID:	51083
UniProt ID:	<a href="#">P22466</a>
Cytogenetics:	11q13.2



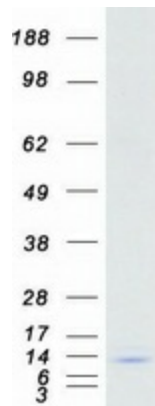
[View online »](#)

**Summary:**

This gene encodes a neuroendocrine peptide that is widely expressed in the central and peripheral nervous systems and also the gastrointestinal tract, pancreas, adrenal gland and urogenital tract. The encoded protein is a precursor that is proteolytically processed to generate two mature peptides: galanin and galanin message-associated peptide (GMAP). Galanin has diverse physiological functions including nociception, feeding and energy homeostasis, osmotic regulation and water balance. GMAP has been demonstrated to possess antifungal activity and hypothesized to be part of the innate immune system. [provided by RefSeq, Jul 2015]

**Protein Families:**

Secreted Protein, Transmembrane

**Product images:**

Coomassie blue staining of purified GAL protein (Cat# [TP307053]). The protein was produced from HEK293T cells transfected with GAL cDNA clone (Cat# [RC207053]) using MegaTran 2.0 (Cat# [TT210002]).