

## Product datasheet for PH307050

### METTL27 (NM\_152559) Human Mass Spec Standard

#### Product data:

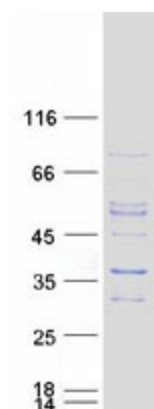
Product Type:	Mass Spec Standards
Description:	WBSCR27 MS Standard C13 and N15-labeled recombinant protein (NP_689772)
Species:	Human
Expression Host:	HEK293
Expression cDNA Clone or AA Sequence:	RC207050
Predicted MW:	26.7 kDa
Protein Sequence:	<p>&gt;RC207050 protein sequence</p> <p>Red=Cloning site Green=Tags(s)</p> <p>MAQEEGGSLEPEVRARVRAAHGIPDLAQKLHFYDRWAPDYDQDVATLLYRAPRLAVDCLTQALPGPPHSAL            ILDVACGTGLVAAELRAPGFLQLHGVDSGPMLEQARAPGLYQRLSLCTLGQEPLPSPEGTFDVAVLIVGA            LSDGQVPCNAIPELHVTKPGGLVCLTTRTNWSNLQYKEALEATLDRLEQAGMWEGLVAWPVDRLWTAGSW            LPPSWWWYPASLPRMASSPALSTCTESGRRLRK</p> <p>TRTRPLEQKLISEEDLAANDILDYKDDDDKV</p>
Tag:	C-Myc/DDK
Purity:	> 80% as determined by SDS-PAGE and Coomassie blue staining
Concentration:	>0.05 µg/µL as determined by microplate BCA method
Labeling Method:	Labeled with [U- <sup>13</sup> C <sub>6</sub> , <sup>15</sup> N <sub>4</sub> ]-L-Arginine and [U- <sup>13</sup> C <sub>6</sub> , <sup>15</sup> N <sub>2</sub> ]-L-Lysine
Buffer:	25 mM Tris-HCl, 100 mM glycine, pH 7.3
Storage:	Store at -80°C. Avoid repeated freeze-thaw cycles.
Stability:	Stable for 3 months from receipt of products under proper storage and handling conditions.
RefSeq:	<a href="#">NP_689772</a>
RefSeq Size:	958
RefSeq ORF:	735
Synonyms:	WBSCR27
Locus ID:	155368
UniProt ID:	<a href="#">Q8N6F8</a>


[View online »](#)

**Cytogenetics:** 7q11.23

**Summary:** This gene encodes a protein belonging to ubiE/COQ5 methyltransferase family. The gene is deleted in Williams syndrome, a multisystem developmental disorder caused by the deletion of contiguous genes at 7q11.22-q11.23. [provided by RefSeq, Jul 2008]

**Product images:**



Coomassie blue staining of purified METTL27 protein (Cat# [TP307050]). The protein was produced from HEK293T cells transfected with METTL27 cDNA clone (Cat# [RC207050]) using MegaTran 2.0 (Cat# [TT210002]).