

Product datasheet for PH307032

CLEC4D (NM_080387) Human Mass Spec Standard

Product data:

Product Type:	Mass Spec Standards
Description:	CLEC4D MS Standard C13 and N15-labeled recombinant protein (NP_525126)
Species:	Human
Expression Host:	HEK293
Expression cDNA Clone or AA Sequence:	RC207032
Predicted MW:	24.7 kDa
Protein Sequence:	>RC207032 protein sequence Red =Cloning site Green =Tags(s) MGLEKPQSKLEGGMHPQLIPSVIAVVFILLLSVCFIASCLVTHHNF SRCKRGTGVHKL EHHAKLKCIKEK SELKSAEGSTWNCCPIDWRAFQSNCFPLTDNKTWAESERNCSGMGAHLMTISTEAEQNFIIQFLDRRLS YFLGLR DENAKGQWRVDQTPFNPRRVF WHKNEPDNSQGENCVLVYVYQDKWAWNDVPCNFEASRICKIP GTTLN TR TRPLEQ KL ISEEDLAANDILDYKDDDDKV
Tag:	C-Myc/DDK
Purity:	> 80% as determined by SDS-PAGE and Coomassie blue staining
Concentration:	>0.05 µg/µL as determined by microplate BCA method
Labeling Method:	Labeled with [U- ¹³ C ₆ , ¹⁵ N ₄]-L-Arginine and [U- ¹³ C ₆ , ¹⁵ N ₂]-L-Lysine
Buffer:	25 mM Tris-HCl, 100 mM glycine, pH 7.3
Storage:	Store at -80°C. Avoid repeated freeze-thaw cycles.
Stability:	Stable for 3 months from receipt of products under proper storage and handling conditions.
RefSeq:	NP_525126
RefSeq Size:	1973
RefSeq ORF:	645
Synonyms:	CD368; CLEC-6; CLEC6; CLECSF8; Dectin-3; MCL; MPCL
Locus ID:	338339
UniProt ID:	Q8WXI8



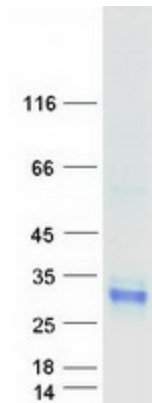
[View online »](#)

Cytogenetics: 12p13.31

Summary: This gene encodes a member of the C-type lectin/C-type lectin-like domain (CTL/CTLD) superfamily. Members of this family share a common protein fold and have diverse functions, such as cell adhesion, cell-cell signalling, glycoprotein turnover, and roles in inflammation and immune response. This gene is closely linked to other CTL/CTLD superfamily members on chromosome 12p13 in the natural killer gene complex region. [provided by RefSeq, Jul 2008]

Protein Families: Druggable Genome, Transmembrane

Product images:



Coomassie blue staining of purified CLEC4D protein (Cat# [TP307032]). The protein was produced from HEK293T cells transfected with CLEC4D cDNA clone (Cat# [RC207032]) using MegaTran 2.0 (Cat# [TT210002]).