

## Product datasheet for PH307030

### CYP4X1 (NM\_178033) Human Mass Spec Standard

#### Product data:

Product Type:	Mass Spec Standards
Description:	CYP4X1 MS Standard C13 and N15-labeled recombinant protein (NP_828847)
Species:	Human
Expression Host:	HEK293
Expression cDNA Clone or AA Sequence:	RC207030
Predicted MW:	58.9 kDa
Protein Sequence:	>RC207030 protein sequence Red=Cloning site Green=Tags(s)

MEFSWLETRWARPFYLAFVFCLALGLLQAIKLYLRRQRLRLRPFAPPTHWFLGHQKFIQDDNMEKLE  
EIEKYPRAFPFWIGPFQAFCCIYDPDYAKTLLSRTDPKSQYLQKFSPELLGKGLAALDGPKWQHRRL  
TPGFHFNILKAYIEVMAHSVMMMLDKWEKICSTQDTSVEVYEHINSMSLDIIMKCAF SKETNCQTNSTHD  
PYAKAIFELSKIIFHRLYSLLYHSDIIFKLS PQGYRFQKLSRVLNQYTDIIQERKKS LQAGVKQDNTPK  
RKYQDFLDIVLSAKDESGSSFSDIDVHSEVSTFLLAGHDTLAASISWILYCLALNPEHQERCREEVRGIL  
GDGSSITWDQLGEMSYTMCIKETCRLIPAVPSISRDL SKPLTFPDGCTLPAGITVVL SIWGLHHPAVW  
KNPKVFDPLRFSQENSQRHPYAYLPFSAGSRNCIGQEFAMIELKVTIALILLHFRVTPDPTRPLTFPNH  
FILKPKNGMYLHLKKLSEC

TRTRPLEQKLI SEEDLAANDILDYKDDDDKV

Tag:	C-Myc/DDK
Purity:	> 80% as determined by SDS-PAGE and Coomassie blue staining
Concentration:	>0.05 µg/µL as determined by microplate BCA method
Labeling Method:	Labeled with [U- <sup>13</sup> C <sub>6</sub> , <sup>15</sup> N <sub>4</sub> ]-L-Arginine and [U- <sup>13</sup> C <sub>6</sub> , <sup>15</sup> N <sub>2</sub> ]-L-Lysine
Buffer:	25 mM Tris-HCl, 100 mM glycine, pH 7.3
Storage:	Store at -80°C. Avoid repeated freeze-thaw cycles.
Stability:	Stable for 3 months from receipt of products under proper storage and handling conditions.
RefSeq:	<a href="#">NP_828847</a>
RefSeq Size:	2382
RefSeq ORF:	1527



[View online »](#)

Synonyms: CYP4X1

Locus ID: 260293

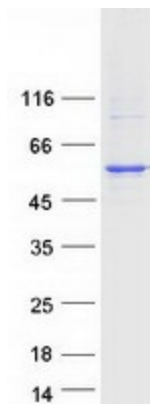
UniProt ID: [Q8N118](#)

Cytogenetics: 1

**Summary:** This gene encodes a member of the cytochrome P450 superfamily of enzymes and is located within a cluster of genes belonging to this superfamily on chromosome 1. The cytochrome P450 proteins are monooxygenases which catalyze many reactions involved in drug metabolism and synthesis of cholesterol, steroids and other lipids. The expression pattern of a similar rat protein suggests that this protein may be involved in neurovascular function in the brain. Alternative splicing results in multiple transcript variants. [provided by RefSeq, Feb 2016]

**Protein Families:** Druggable Genome, P450, Transmembrane

### Product images:



Coomassie blue staining of purified CYP4X1 protein (Cat# [TP307030]). The protein was produced from HEK293T cells transfected with CYP4X1 cDNA clone (Cat# [RC207030]) using MegaTran 2.0 (Cat# [TT210002]).