

## Product datasheet for PH307011

### MPP2 (NM\_005374) Human Mass Spec Standard

#### Product data:

Product Type:	Mass Spec Standards
Description:	MPP2 MS Standard C13 and N15-labeled recombinant protein (NP_005365)
Species:	Human
Expression Host:	HEK293
Expression cDNA Clone or AA Sequence:	RC207011
Predicted MW:	61.6 kDa
Protein Sequence:	>RC207011 protein sequence Red=Cloning site Green=Tags(s)

MPVAATNSETAMQQVLDNLGSLPSATGAAELDLIFLRGIMESPIVRSLAKAHERLEETKLEAVRDNNLEL  
VQEILRDLAQLAEQSSTAELAHLIQEPHFQSLLETHDSVASKTYETPPSPGLDPTFSNQVPPDAVRM  
VGIRKTAGEHLGVTFRVEGGELVIARILHGGMVAQQGLLHVGDIIKEVNGQPVGSDPRALQELLRNASGS  
VILKILPSYQEPHLPRQVFKCHFDPARDSLIPCKEAGLRFNAGDLLQIVNQDDANWWQACHVEGSSA  
GLIPSQLLLEEKRAFVKRDLELTPNSGTLGSLSGKKKRRMYLTTKNAEFDRHELLIYEEVARMPPFRR  
KTLVLIQAQGVGRRSLKNKLIWDPDRYGTTVPYTSRRPKDSEREGQGYSFVSRGEMEADV RAGRYLEHG  
EYEGNLYGTRIDSIRGVVAAGKVCVLDVNPQAVKVLRTAEFVYVVFIEAPDFETLRAMNRAALESGIST  
KQLTEADLRRTVEESSRIQRGYGHYFDLCLVNSNLERTFRELQTAMEKLRTPEQWVPVSWVY

TRTRPLEQKLI SEEDLAANDILDYKDDDDKV

Tag:	C-Myc/DDK
Purity:	> 80% as determined by SDS-PAGE and Coomassie blue staining
Concentration:	>0.05 µg/µL as determined by microplate BCA method
Labeling Method:	Labeled with [U- <sup>13</sup> C <sub>6</sub> , <sup>15</sup> N <sub>4</sub> ]-L-Arginine and [U- <sup>13</sup> C <sub>6</sub> , <sup>15</sup> N <sub>2</sub> ]-L-Lysine
Buffer:	25 mM Tris-HCl, 100 mM glycine, pH 7.3
Storage:	Store at -80°C. Avoid repeated freeze-thaw cycles.
Stability:	Stable for 3 months from receipt of products under proper storage and handling conditions.
RefSeq:	<u><a href="#">NP_005365</a></u>
RefSeq Size:	4645
RefSeq ORF:	1656



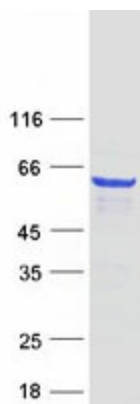
[View online »](#)

**Synonyms:** DLG2  
**Locus ID:** 4355  
**UniProt ID:** [Q14168](#), [D3DX48](#)  
**Cytogenetics:** 17q21.31

**Summary:** Palmitoylated membrane protein 2 is a member of a family of membrane-associated proteins termed MAGUKs (membrane-associated guanylate kinase homologs). MAGUKs interact with the cytoskeleton and regulate cell proliferation, signaling pathways, and intracellular junctions. Palmitoylated membrane protein 2 contains a conserved sequence, called the SH3 (src homology 3) motif, found in several other proteins that associate with the cytoskeleton and are suspected to play important roles in signal transduction. [provided by RefSeq, Jul 2008]

**Protein Families:** Druggable Genome

### Product images:



Coomassie blue staining of purified MPP2 protein (Cat# [TP307011]). The protein was produced from HEK293T cells transfected with MPP2 cDNA clone (Cat# [RC207011]) using MegaTran 2.0 (Cat# [TT210002]).