

Product datasheet for PH307007

C7orf16 (PPP1R17) (NM_006658) Human Mass Spec Standard

Product data:

Product Type:	Mass Spec Standards
Description:	C7orf16 MS Standard C13 and N15-labeled recombinant protein (NP_006649)
Species:	Human
Expression Host:	HEK293
Expression cDNA Clone or AA Sequence:	RC207007
Predicted MW:	17.9 kDa
Protein Sequence:	>RC207007 protein sequence Red=Cloning site Green=Tags(s) MMSTEQMQPLEVSEDRLDKLDPRCSHLDDLSDQFIKDCDLKKKPRKGNVQATLNVESDQKKPRRKDTPA LHIPPFIPGVFSEHLIKRYDVQERHPKGMIPVLHNTDLEQKKPRRKDTPALHMSPPFAAGVTLLRDERPK AIVEDDEKDGDKIAI TRTRPLEQKLI SEEDLAANDILDYKDDDDKV
Tag:	C-Myc/DDK
Purity:	> 80% as determined by SDS-PAGE and Coomassie blue staining
Concentration:	>0.05 µg/µL as determined by microplate BCA method
Labeling Method:	Labeled with [U- ¹³ C ₆ , ¹⁵ N ₄]-L-Arginine and [U- ¹³ C ₆ , ¹⁵ N ₂]-L-Lysine
Buffer:	25 mM Tris-HCl, 100 mM glycine, pH 7.3
Storage:	Store at -80°C. Avoid repeated freeze-thaw cycles.
Stability:	Stable for 3 months from receipt of products under proper storage and handling conditions.
RefSeq:	NP_006649
RefSeq Size:	1966
RefSeq ORF:	465
Synonyms:	C7orf16; GSBS
Locus ID:	10842
UniProt ID:	O96001 , A0A090N8N7



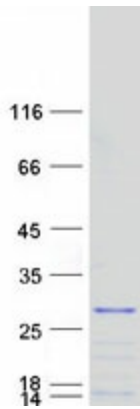
[View online »](#)

Cytogenetics: 7p14.3

Summary: The protein encoded by this gene is found primarily in cerebellar Purkinje cells, where it functions as a protein phosphatase inhibitor. The encoded protein is a substrate for cGMP-dependent protein kinase. An allele of this gene was discovered that increases susceptibility to hypercholesterolemia. Two transcript variants encoding different isoforms have been found for this gene. [provided by RefSeq, Jul 2010]

Protein Pathways: Long-term depression

Product images:



Coomassie blue staining of purified PPP1R17 protein (Cat# [TP307007]). The protein was produced from HEK293T cells transfected with PPP1R17 cDNA clone (Cat# [RC207007]) using MegaTran 2.0 (Cat# [TT210002]).