

Product datasheet for PH307003

LILRA3 (NM_006865) Human Mass Spec Standard

Product data:

Product Type:	Mass Spec Standards
Description:	LILRA3 MS Standard C13 and N15-labeled recombinant protein (NP_006856)
Species:	Human
Expression Host:	HEK293
Expression cDNA Clone or AA Sequence:	RC207003
Predicted MW:	47.5 kDa
Protein Sequence:	>RC207003 protein sequence Red=Cloning site Green=Tags(s)

MTSILTVL ICLGLSLDPRTHVQAGPLPKPTLWAEPGSVITQGSPVTLRCQGSLETQEYHLYREKKTALWI
TRIPQELVKKGQFPILSITWEHAGRYCCYGSHTVGLSESSDPLELVVTGAYSKPTLSALPSPVVTSGGN
VTIQDQSQVAFDGFILCKEGEDEHPQCLNSHSHARGSSRAIFSVGPVSPSRRWSYRCYGYDSRAPYVWSL
PSDLLGLLVPGVSKKPSLSVQPGPVVAPGEKLTFCGSDAGYDRFVLKKEWGRDFLQRPGRQPQAGLSQA
NFTLLGPVSRSYGGQYTCSGAYNLSSEWSAPSDPLDILITGQIRARPFLSVRPGPTVASGENVTLLCQSQG
GMHTFLLTKEGAADSPLRLKSKRQSHKYQAEFPMSPVTSAHAGTYRCYGSLSNPNYLLTHPSDPLELVVS
GAAETLSPPQNKSDSKAGE

TRTRPLEQKLI SEEDLAANDILDYKDDDDKV

Tag:	C-Myc/DDK
Purity:	> 80% as determined by SDS-PAGE and Coomassie blue staining
Concentration:	>0.05 µg/µL as determined by microplate BCA method
Labeling Method:	Labeled with [U- ¹³ C ₆ , ¹⁵ N ₄]-L-Arginine and [U- ¹³ C ₆ , ¹⁵ N ₂]-L-Lysine
Buffer:	25 mM Tris-HCl, 100 mM glycine, pH 7.3
Storage:	Store at -80°C. Avoid repeated freeze-thaw cycles.
Stability:	Stable for 3 months from receipt of products under proper storage and handling conditions.
RefSeq:	<u>NP_006856</u>
RefSeq Size:	1608
RefSeq ORF:	1317
Synonyms:	CD85E; HM31; HM43; ILT-6; ILT6; LIR-4; LIR4



[View online »](#)

Locus ID: 11026

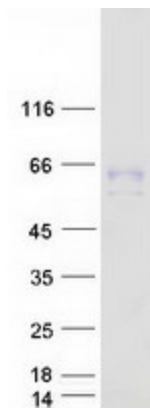
UniProt ID: [Q8N6C8](#)

Cytogenetics: 19q13.4

Summary: This gene encodes a member of a family of immunoreceptors that are expressed predominantly in monocytes and B cells, and at lower levels in dendritic cells and natural killer cells. The encoded protein lacks the transmembrane region found in other members of this family. It acts as a soluble receptor for class I major histocompatibility complex (MHC) antigens. Alternatively spliced transcript variants encoding different isoforms have been found. This gene is located in a cluster of related genes on chromosome 19 and is polymorphic in human populations, with many individuals containing a deletion of this genomic region. [provided by RefSeq, Mar 2014]

Protein Families: Secreted Protein

Product images:



Coomassie blue staining of purified LILRA3 protein (Cat# [TP307003]). The protein was produced from HEK293T cells transfected with LILRA3 cDNA clone (Cat# [RC207003]) using MegaTran 2.0 (Cat# [TT210002]).