

## Product datasheet for PH306991

### CD94 (KLRD1) (NM\_002262) Human Mass Spec Standard

#### Product data:

Product Type:	Mass Spec Standards
Description:	KLRD1 MS Standard C13 and N15-labeled recombinant protein (NP_002253)
Species:	Human
Expression Host:	HEK293
Expression cDNA Clone or AA Sequence:	RC206991
Predicted MW:	20.5 kDa
Protein Sequence:	>RC206991 protein sequence Red=Cloning site Green=Tags(s)  MAVFKTTLWRLISGTLGIICLSMATLGILLKNSFTKLSIEPAFTPGPNIELQKDSGCCSCQEKWVG YRC NCYFISSEQKTWNE SRHLCASQKSSLLQLQNTDELDFMSSSQFYWIGLSYSEEHTAWLWENG SALSQYL FPSFETFNTKNCIAYNPNGNALDESCEDKNRYICKQQLI  TRTRPLEQKLI SEEDLAANDILDYKDDDDKV
Tag:	C-Myc/DDK
Purity:	> 80% as determined by SDS-PAGE and Coomassie blue staining
Concentration:	>0.05 µg/µL as determined by microplate BCA method
Labeling Method:	Labeled with [U- 13C6, 15N4]-L-Arginine and [U- 13C6, 15N2]-L-Lysine
Buffer:	25 mM Tris-HCl, 100 mM glycine, pH 7.3
Storage:	Store at -80°C. Avoid repeated freeze-thaw cycles.
Stability:	Stable for 3 months from receipt of products under proper storage and handling conditions.
RefSeq:	<a href="#">NP_002253</a>
RefSeq Size:	3258
RefSeq ORF:	537
Synonyms:	CD94
Locus ID:	3824
UniProt ID:	<a href="#">Q13241</a> , <a href="#">Q53ZY6</a>



[View online »](#)

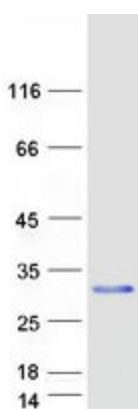
**Cytogenetics:** 12p13.2

**Summary:** Natural killer (NK) cells are a distinct lineage of lymphocytes that mediate cytotoxic activity and secrete cytokines upon immune stimulation. Several genes of the C-type lectin superfamily, including members of the NKG2 family, are expressed by NK cells and may be involved in the regulation of NK cell function. KLRD1 (CD94) is an antigen preferentially expressed on NK cells and is classified as a type II membrane protein because it has an external C terminus. Several transcript variants encoding different isoforms have been found for this gene. [provided by RefSeq, May 2017]

**Protein Families:** Transmembrane

**Protein Pathways:** Antigen processing and presentation, Graft-versus-host disease, Natural killer cell mediated cytotoxicity

### Product images:



Coomassie blue staining of purified KLRD1 protein (Cat# [TP306991]). The protein was produced from HEK293T cells transfected with KLRD1 cDNA clone (Cat# [RC206991]) using MegaTran 2.0 (Cat# [TT210002]).