

## Product datasheet for PH306974

### TORC1 (CRTC1) (NM\_015321) Human Mass Spec Standard

#### Product data:

Product Type:	Mass Spec Standards
Description:	CRTC1 MS Standard C13 and N15-labeled recombinant protein (NP_056136)
Species:	Human
Expression Host:	HEK293
Expression cDNA Clone or AA Sequence:	RC206974
Predicted MW:	67.1 kDa
Protein Sequence:	>RC206974 representing NM_015321 Red=Cloning site Green=Tags(s)

MATSNPRKFSEKIALHNQQAEEAFAFEVMDKLSLTRAARLQLQKSQYLQLGSPRGQYYGGSLPNVQ  
IGSGTMDLFPQTFFQSSGLDTSRTTRHHGLVDRVYRERGLGSPHRRPLSVDKHGRQADSCPYGTMVLS  
PADTSWRRNTSDSALHQSTMTPTQPEFSFGSDVHQKRVLLLTVPMEETTSEADKNLSKQAWDTKKTG  
SRPKSCEVPGINIFPSADQENTTALIPATHNTGGSLPDLTNIHFPSPLPTPLDPEEPTFPALSSSSSTGN  
LAANLTHLGIGGAGQGMSTPGSSPQHRPAGVSPLSLSTEARRQQASPALSPLSPITQAVAMDALSLEQQL  
PYAFFTQAGSQQPPPPQPPPPPPASQQPPPPPPQAPVRLPPGGPLLPSASLTRGPQPPPLAVTVSS  
LPQSPENPGQPSMGIDIASAPALQQYRTSAGSPANQSPTSPVSNQGFSPGSSPQHTSTLGSVFGDAYYE  
QQMAARQANALSHQLEQFNMMENAISSSSLYSPGSTLNYSQAAMMGLTGSHGSLPDSQQLGYASHSGIPN  
IILTVTGESPPSLSKELTSSLAGVGDVFSFSDSQFPLDELKIDPLTLDGLHMLNDPDMVLADPATEDTFR  
MDRL

SGPTRRRL**EQKLISEEDLAANDILDYKDDDDKV**

Tag:	C-Myc/DDK
Purity:	> 80% as determined by SDS-PAGE and Coomassie blue staining
Concentration:	>0.05 µg/µL as determined by microplate BCA method
Labeling Method:	Labeled with [U- <sup>13</sup> C <sub>6</sub> , <sup>15</sup> N <sub>4</sub> ]-L-Arginine and [U- <sup>13</sup> C <sub>6</sub> , <sup>15</sup> N <sub>2</sub> ]-L-Lysine
Buffer:	25 mM Tris-HCl, 100 mM glycine, pH 7.3
Storage:	Store at -80°C. Avoid repeated freeze-thaw cycles.
Stability:	Stable for 3 months from receipt of products under proper storage and handling conditions.
RefSeq:	<a href="#">NP_056136</a>
RefSeq Size:	2505



[View online »](#)

RefSeq ORF: 1902

Synonyms: Mam-2; MAML2; MECT1; TORC-1; TORC1; WAMTP1

Locus ID: 23373

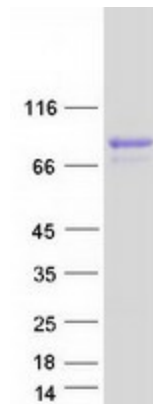
UniProt ID: [Q6UUU9](#)

Cytogenetics: 19p13.11

**Summary:** Transcriptional coactivator for CREB1 which activates transcription through both consensus and variant cAMP response element (CRE) sites. Acts as a coactivator, in the SIK/TORC signaling pathway, being active when dephosphorylated and acts independently of CREB1 'Ser-133' phosphorylation. Enhances the interaction of CREB1 with TAF4. Regulates the expression of specific CREB-activated genes such as the steroidogenic gene, StAR. Potent coactivator of PGC1alpha and inducer of mitochondrial biogenesis in muscle cells. In the hippocampus, involved in late-phase long-term potentiation (L-LTP) maintenance at the Schaffer collateral-CA1 synapses. May be required for dendritic growth of developing cortical neurons (By similarity). In concert with SIK1, regulates the light-induced entrainment of the circadian clock. In response to light stimulus, coactivates the CREB-mediated transcription of PER1 which plays an important role in the photic entrainment of the circadian clock. [UniProtKB/Swiss-Prot Function]

**Protein Families:** Transcription Factors

### Product images:



Coomassie blue staining of purified CRTC1 protein (Cat# [TP306974]). The protein was produced from HEK293T cells transfected with CRTC1 cDNA clone (Cat# [RC206974]) using MegaTran 2.0 (Cat# [TT210002]).