

Product datasheet for PH306968

PCDH17 (NM_001040429) Human Mass Spec Standard

Product data:

Product Type:	Mass Spec Standards
Description:	PCDH17 MS Standard C13 and N15-labeled recombinant protein (NP_001035519)
Species:	Human
Expression Host:	HEK293
Expression cDNA Clone or AA Sequence:	RC206968
Predicted MW:	126.23 kDa
Protein Sequence:	>RC206968 representing NM_001040429 Red=Cloning site Green=Tags(s)

MYLSICCCFLLWAPALTTLKNLNYSVP EEGAGTVIGNIGRDARLQPGLPPAERGGGRSKSGSYRVLENS
APHLLDVDADSGLLYTKQRIDRESLCRHNAKCQLSLEVFANDKEICMIKVEIQDINDNAPSFSSDQIEMD
ISENAAPGTRFPLTSAHDPDAGENGLRITYLLTRDDHGLFGLDVKSRGDGTFPELVIQKALDREQQNHHT
LVL TALDGGEP PRSATVQINVKVIDSNDNSPVFEAPSYLVELPENAPLGTVVIDL NATDADEGPNGEVLY
SFSSYVDPDRVRELF SIDPKTGLIRVKGNLDYEENGMLEIDVQARDLGNP I PAHKVTVK LIDRNDNAPS
IGFVSVRQ GALSEAAPP GTVIALVRVTRDRDSGKNGQLQCRVLGGGGTGGGGGLGGPGGSVPFKLEENYDN
FYTVVTRPLDRETQDEYNVTIVARDGGSPLNSTKSF AIKILDENDNPPRFTKGLYVLQVHENNIPGEY
LGSVLAQDPDLGQNGTVSYSILPSHIGDVSIIYTVSVNPTNGAIYALRSFNFEQTKAFEFKVLAKDSGAP
AHLESNATVRVTLDVNDNAPVIVLPTLQNDTAE LQVPRNAGLGYLVSTVRALDSDFGESGRLTYEIVDG
NDDHLFEIDPSSGEIRTLHPFWEDVTPVVELVVKVTDHGKPTLSAVAKLIIRSVSGSLPEGVPRVNGEQH
HWDMSLPLIVTLSTISII LLAAMITIAVKCKRENKEIRTYNCRIAEYSHPQLGGGKGGKKKINKNDIMLV
QSEVEERNAMNMVNVSSPLATSPMYFDYQTRLPLSSPRSEVMYLPASNLTVPQGHAGCHTSFTGQG
TNAETPATRMSIIQTDNFP AEPNYMGSRQQFVQSSTFKDPERASLRDSGHGSDSQADSDQDTNKGSCC
DMSVREALKMKTTSTKSQPLEQEPEECVNCTDECRVLGHSRDCWMPQFPAAANQAENADYRTNLFVPTVEA
NVETETVETVNP TGKKTCTFGKDKREHTILIANVKPYLKAKRALSP LLQEVPSASSSPTKACIEPCTST
KGS LDGCEAKPGALAEASSQYLPTDSQYLSPSKQPRDPPF MASDQMARVF ADVHSRASRDSSEMGAVLEQ
LDHPNRDLGRESVDAEEVREIDKLLQDCRGNDPVAVRK

TRTRPLEQKLISEEDLAANDILDYKDDDDKV

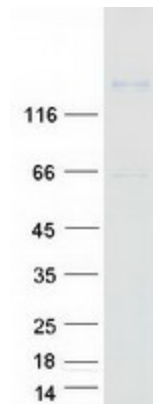
Tag:	C-Myc/DDK
Purity:	> 80% as determined by SDS-PAGE and Coomassie blue staining
Concentration:	>0.05 µg/µL as determined by microplate BCA method
Labeling Method:	Labeled with [U- ¹³ C ₆ , ¹⁵ N ₄]-L-Arginine and [U- ¹³ C ₆ , ¹⁵ N ₂]-L-Lysine
Buffer:	25 mM Tris-HCl, 100 mM glycine, pH 7.3



[View online >](#)

Storage:	Store at -80°C. Avoid repeated freeze-thaw cycles.
Stability:	Stable for 3 months from receipt of products under proper storage and handling conditions.
RefSeq:	NP_001035519
RefSeq Size:	8009
RefSeq ORF:	3477
Synonyms:	PCDH68; PCH68
Locus ID:	27253
UniProt ID:	O14917
Cytogenetics:	13q21.1
Summary:	This gene belongs to the protocadherin gene family, a subfamily of the cadherin superfamily. The encoded protein contains six extracellular cadherin domains, a transmembrane domain, and a cytoplasmic tail differing from those of the classical cadherins. The encoded protein may play a role in the establishment and function of specific cell-cell connections in the brain. [provided by RefSeq, Jul 2008]
Protein Families:	Druggable Genome

Product images:



Coomassie blue staining of purified PCDH17 protein (Cat# [TP306968]). The protein was produced from HEK293T cells transfected with PCDH17 cDNA clone (Cat# [RC206968]) using MegaTran 2.0 (Cat# [TT210002]).