

Product datasheet for PH306966

SLC25A16 (NM_152707) Human Mass Spec Standard

Product data:

Product Type:	Mass Spec Standards
Description:	SLC25A16 MS Standard C13 and N15-labeled recombinant protein (NP_689920)
Species:	Human
Expression Host:	HEK293
Expression cDNA Clone or AA Sequence:	RC206966
Predicted MW:	36.2 kDa
Protein Sequence:	>RC206966 protein sequence Red =Cloning site Green =Tags(s)

MAAATAAAALAAADPPPAMPQAAGAGGPTTRRDFYWLRSFLAGGIAGCCAKTTVAPLDRVKVLQAHNHH
 YKHLGVFSALRAVPQKEGFLGLYKNGAMMIRIFPYGAIQFMAFEHYKTLITTKLGISGHVHRLMAGSMA
 GMTAVICTYPLDMVRVRLAFQVKEHSYTGIIHAFKTIYAKEGGFFGFYRGLMPTILGMAPYAGVSFFTF
 GTLKSVGLSHAPTLLGRPSSDNPVNLVKTHVNLLCGGVAGIAQTISYPFDVTRRRMQLGTVLPEFEKC
 LTMRDTMKYVYVGHGIRKGLYRGLSLNYIRCIPSQAVAFTTYELMKQFFHLN

TRTRPLEQKLISEEDLAANDILDYKDDDDKV

Tag:	C-Myc/DDK
Purity:	> 80% as determined by SDS-PAGE and Coomassie blue staining
Concentration:	>0.05 µg/µL as determined by microplate BCA method
Labeling Method:	Labeled with [U- ¹³ C ₆ , ¹⁵ N ₄]-L-Arginine and [U- ¹³ C ₆ , ¹⁵ N ₂]-L-Lysine
Buffer:	25 mM Tris-HCl, 100 mM glycine, pH 7.3
Storage:	Store at -80°C. Avoid repeated freeze-thaw cycles.
Stability:	Stable for 3 months from receipt of products under proper storage and handling conditions.
RefSeq:	<u>NP_689920</u>
RefSeq Size:	2264
RefSeq ORF:	996
Synonyms:	D10S105E; GDA; GDC; HGT.1; hML7; ML7
Locus ID:	8034


[View online »](#)

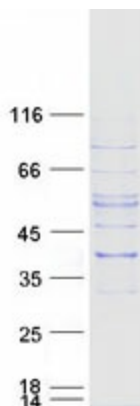
UniProt ID: [P16260](#)

Cytogenetics: 10q21.3

Summary: This gene encodes a protein that contains three tandemly repeated mitochondrial carrier protein domains. The encoded protein is localized in the inner membrane and facilitates the rapid transport and exchange of molecules between the cytosol and the mitochondrial matrix space. This gene has a possible role in Graves' disease. [provided by RefSeq, Jul 2008]

Protein Families: Druggable Genome

Product images:



Coomassie blue staining of purified SLC25A16 protein (Cat# [TP306966]). The protein was produced from HEK293T cells transfected with SLC25A16 cDNA clone (Cat# [RC206966]) using MegaTran 2.0 (Cat# [TT210002]).