

Product datasheet for PH306910

STK33 (NM_030906) Human Mass Spec Standard

Product data:

Product Type:	Mass Spec Standards
Description:	STK33 MS Standard C13 and N15-labeled recombinant protein (NP_112168)
Species:	Human
Expression Host:	HEK293
Expression cDNA Clone or AA Sequence:	RC206910
Predicted MW:	57.9 kDa
Protein Sequence:	>RC206910 protein sequence Red=Cloning site Green=Tags(s)

MADSGLDKKSTKCPDCSSASQKDVLVCVSSKTRVPPVLVVEMSQTSIGSAESLISLERKKEKNINRDIT
SRKDLPSRTSNVERKASQQWGRGNFTEGKVPHIRIENGAAIEEYTFGRILGKGSFGIVIEATDKETET
KWAIKKVNKEKAGSSAVKLLEREVNIKSVKHEHIIHLEQVFETPKKMYLVMELCEDGELKEILDRKGHF
SENETRWIIQSLASAIAYLHNNDIVHRDLKLENIMVKSSLIDDNNEINLNIKVTDFGLAVKKQSRSEAML
QATCGTPIYMAPEVISAHDYSQQCDIWSIGVVMYMLLRGEPFLASSEKLFELIRKGFHFENAVWNSI
SDCAKSVLKQLMKVDPAHRITAKELLDNQWLGNKLSVRPTNVLEMMKEWKNNPESVEENTTEKNKPS
TEEKLKSYQPWGNVPETNYTSDEEEKQSTTYEKQFPATSKDNFDMCSSSFTSSKLLPAEIKGEMEKTPV
TPSQGTATKYPKSGALSRTKKKL

TRTRPLEQKLISEEDLAANDILDYKDDDDKV

Tag:	C-Myc/DDK
Purity:	> 80% as determined by SDS-PAGE and Coomassie blue staining
Concentration:	>0.05 µg/µL as determined by microplate BCA method
Labeling Method:	Labeled with [U- 13C6, 15N4]-L-Arginine and [U- 13C6, 15N2]-L-Lysine
Buffer:	25 mM Tris-HCl, 100 mM glycine, pH 7.3
Storage:	Store at -80°C. Avoid repeated freeze-thaw cycles.
Stability:	Stable for 3 months from receipt of products under proper storage and handling conditions.
RefSeq:	NP_112168
RefSeq Size:	2764
RefSeq ORF:	1542



[View online »](#)

Locus ID: 65975

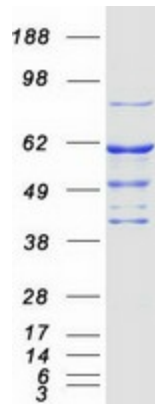
UniProt ID: [Q9BYT3](#)

Cytogenetics: 11p15.4

Summary: Serine/threonine protein kinase which phosphorylates VIME. May play a specific role in the dynamic behavior of the intermediate filament cytoskeleton by phosphorylation of VIME (By similarity). Not essential for the survival of KRAS-dependent AML cell lines.[UniProtKB/Swiss-Prot Function]

Protein Families: Druggable Genome, Protein Kinase

Product images:



Coomassie blue staining of purified STK33 protein (Cat# [TP306910]). The protein was produced from HEK293T cells transfected with STK33 cDNA clone (Cat# [RC206910]) using MegaTran 2.0 (Cat# [TT210002]).