

Product datasheet for PH306858

Ornithine Decarboxylase (ODC1) (NM_002539) Human Mass Spec Standard

Product data:

Product Type:	Mass Spec Standards
Description:	ODC1 MS Standard C13 and N15-labeled recombinant protein (NP_002530)
Species:	Human
Expression Host:	HEK293
Expression cDNA Clone or AA Sequence:	RC206858
Predicted MW:	51.1 kDa
Protein Sequence:	>RC206858 protein sequence Red=Cloning site Green=Tags(s)

MNFGNEEFDCHFLDEGFTAKDILDQKINEVSSDDKDAFYVADLGDILKKHLRWL KALPRVTPFYAVKC
 NDSKAIVKTLAATGTGFDCASKTEIQLVQSLGVPPERIIYANPCKQVSQIKYAANNGVQMMTFDSEVELM
 KVARAHPKAKLVLRIATDDSKAVCRLSVKFGATLRTSRLLLERAKELNIDVVGVSFHVGSCTDPETFVQ
 AISDARCVDMGAEVGFSMYLLDIGGGFPGSEDKLKFEETGVINPALDKYFSDSGVRIIAEPGRYYV
 ASAF TLAVNIIAKKIVLKEQTGSDDDESEQTFMYVNDGVYGSFNCILYDHAHVKPLLQKRPKPDEKY
 YSSSIWGPTCDGLDRIVERCDLPEMHVGDWMLFENMGAYTVA AASTFNGFQRPTIYYVMGPAWQLMQQF
 QNPDPPEVEEQDASTLPVSCAWESGMKRHRAACASASINV

TRTRPLEQKLI SEEDLAANDILDYKDDDDKV

Tag:	C-Myc/DDK
Purity:	> 80% as determined by SDS-PAGE and Coomassie blue staining
Concentration:	>0.05 µg/µL as determined by microplate BCA method
Labeling Method:	Labeled with [U- ¹³ C ₆ , ¹⁵ N ₄]-L-Arginine and [U- ¹³ C ₆ , ¹⁵ N ₂]-L-Lysine
Buffer:	25 mM Tris-HCl, 100 mM glycine, pH 7.3
Storage:	Store at -80°C. Avoid repeated freeze-thaw cycles.
Stability:	Stable for 3 months from receipt of products under proper storage and handling conditions.
RefSeq:	<u>NP_002530</u>
RefSeq Size:	2307
RefSeq ORF:	1383
Synonyms:	BABS; NEDBA; NEDBIA; ODC



[View online »](#)

Locus ID: 4953

UniProt ID: [P11926](#)

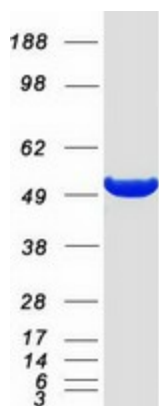
Cytogenetics: 2p25.1

Summary: This gene encodes the rate-limiting enzyme of the polyamine biosynthesis pathway which catalyzes ornithine to putrescine. The activity level for the enzyme varies in response to growth-promoting stimuli and exhibits a high turnover rate in comparison to other mammalian proteins. Originally localized to both chromosomes 2 and 7, the gene encoding this enzyme has been determined to be located on 2p25, with a pseudogene located on 7q31-qter. Multiple alternatively spliced transcript variants encoding distinct isoforms have been identified. [provided by RefSeq, Dec 2013]

Protein Families: Druggable Genome

Protein Pathways: Arginine and proline metabolism, Glutathione metabolism, Metabolic pathways

Product images:



Coomassie blue staining of purified ODC1 protein (Cat# [TP306858]). The protein was produced from HEK293T cells transfected with ODC1 cDNA clone (Cat# [RC206858]) using MegaTran 2.0 (Cat# [TT210002]).