

## Product datasheet for PH306840

### TFE3 (NM\_006521) Human Mass Spec Standard

#### Product data:

Product Type:	Mass Spec Standards
Description:	TFE3 MS Standard C13 and N15-labeled recombinant protein (NP_006512)
Species:	Human
Expression Host:	HEK293
Expression cDNA Clone or AA Sequence:	RC206840
Predicted MW:	61.5 kDa
Protein Sequence:	>RC206840 protein sequence Red=Cloning site Green=Tags(s)

MSHAAEPARDGVEASAEGPRAVFLLEERRPADSAQLLSLNSLLPESGIVADIELENVLDPDSFYELKSQ  
PLPLRSSLPISLQATPATPATLSASSSAGSRTAMPSSSSSRVLLRQQLMRAQAQEQRERREQAAAA  
PFPSPAPASPAISVVGVSAGGHTLSRPPPAQVPREVLKVQTHLENPTRYHLQQARRQVQKYLSTTLGPK  
LASQALTPPPGPASAQPLPAPEAAHTTGPTGSAPNSPMALLTIGSSSEKEIDDVIDEIIISLESSYNDEML  
SYLPGGTTGLQLPSTLPVSGNLLDVYSSQGVATPAITVSNSCPaelPNIKREISETeAKALLKERQKDN  
HNLIERRRRNINDRIKELGTLIPKSSDPEMRWNKGTILKASVDYIRKLQKEQQRSKDLESRQRSLEQAN  
RSLQLRIQELELQAQIHGLPVPPTPGLLSLATTASDSLKPEQLDIEEEGRPGAATFHVGGGPAQNAPHQ  
QPPAPPSDALLDLHFPSDHLGDLGDPFHLGLEDILMEEEEGVVGLSGGALSPLRAASDPLLSSVSPAVS  
KASSRRSSFMEES

TRTRPLEQKLISEEDLAANDILDYKDDDDKV

Tag:	C-Myc/DDK
Purity:	> 80% as determined by SDS-PAGE and Coomassie blue staining
Concentration:	>0.05 µg/µL as determined by microplate BCA method
Labeling Method:	Labeled with [U- 13C6, 15N4]-L-Arginine and [U- 13C6, 15N2]-L-Lysine
Buffer:	25 mM Tris-HCl, 100 mM glycine, pH 7.3
Storage:	Store at -80°C. Avoid repeated freeze-thaw cycles.
Stability:	Stable for 3 months from receipt of products under proper storage and handling conditions.
RefSeq:	<a href="#">NP_006512</a>
RefSeq Size:	3467
RefSeq ORF:	1725



[View online »](#)

**Synonyms:** bHLHe33; RCCP2; RCCX1; TFEA

**Locus ID:** 7030

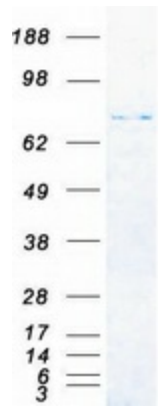
**UniProt ID:** [P19532](#), [A0A024QZ23](#)

**Cytogenetics:** Xp11.23

**Summary:** This gene encodes a basic helix-loop-helix domain-containing transcription factor that binds MUE3-type E-box sequences in the promoter of genes. The encoded protein promotes the expression of genes downstream of transforming growth factor beta (TGF-beta) signaling. This gene may be involved in chromosomal translocations in renal cell carcinomas and other cancers, resulting in the production of fusion proteins. Translocation partners include PRCC (papillary renal cell carcinoma), NONO (non-POU domain containing, octamer-binding), and ASPSCR1 (alveolar soft part sarcoma chromosome region, candidate 1), among other genes. Alternative splicing results in multiple transcript variants. [provided by RefSeq, Aug 2013]

**Protein Families:** Druggable Genome, Transcription Factors

### Product images:



Coomassie blue staining of purified TFE3 protein (Cat# [TP306840]). The protein was produced from HEK293T cells transfected with TFE3 cDNA clone (Cat# [RC206840]) using MegaTran 2.0 (Cat# [TT210002]).