

Product datasheet for PH306827

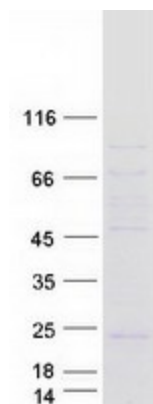
LOC541469 (NM_001013617) Human Mass Spec Standard

Product data:

Product Type:	Mass Spec Standards
Description:	LOC541469 MS Standard C13 and N15-labeled recombinant protein (NP_001013639)
Species:	Human
Expression Host:	HEK293
Expression cDNA Clone or AA Sequence:	RC206827
Predicted MW:	14.9 kDa
Protein Sequence:	<p>>RC206827 protein sequence</p> <p>Red=Cloning site Green=Tags(s)</p> <p>MLSCCLEPAAWDCGAEGRDGREEMVLGWKRDRTTPRTLPA SP SAGT PLWGAGHVLGDAGESPLPSHPCP NRWSCCWSRKSCGVLAGWRCGSEAAPLTQPPEVGGLRQDPGVRGNPSLPAPPQPMRRLTFGPGPAPASD RP</p> <p>TRTRPLEQKLISEEDLAANDILDYKDDDDKV</p>
Tag:	C-Myc/DDK
Purity:	> 80% as determined by SDS-PAGE and Coomassie blue staining
Concentration:	>0.05 µg/µL as determined by microplate BCA method
Labeling Method:	Labeled with [U- ¹³ C ₆ , ¹⁵ N ₄]-L-Arginine and [U- ¹³ C ₆ , ¹⁵ N ₂]-L-Lysine
Buffer:	25 mM Tris-HCl, 100 mM glycine, pH 7.3
Storage:	Store at -80°C. Avoid repeated freeze-thaw cycles.
Stability:	Stable for 3 months from receipt of products under proper storage and handling conditions.
RefSeq:	<u>NP_001013639</u>
RefSeq Size:	1487
RefSeq ORF:	426
Synonyms:	FinGER8
Locus ID:	541469
Cytogenetics:	19q13.2


[View online »](#)

Product images:



Coomassie blue staining of purified LOC541469 protein (Cat# [TP306827]). The protein was produced from HEK293T cells transfected with LOC541469 cDNA clone (Cat# [RC206827]) using MegaTran 2.0 (Cat# [TT210002]).