

Product datasheet for PH306811

BNIPL (NM_138278) Human Mass Spec Standard

Product data:

Product Type:	Mass Spec Standards
Description:	BNIPL MS Standard C13 and N15-labeled recombinant protein (NP_612122)
Species:	Human
Expression Host:	HEK293
Expression cDNA Clone or AA Sequence:	RC206811
Predicted MW:	39.7 kDa
Protein Sequence:	>RC206811 protein sequence Red =Cloning site Green =Tags(s)

MGTIQEAGKKT DVG VREIAEAPELGAALRHGELELKEEWQDEEFPRLLPEEAGTSEDPEDPKGDSQAAAG
 TPSTLALCGQRP MRKRLSAPELRLSLTKGPGNDGASPTQSAPSSPDGSSDLEIDELETPSDSEQLDSGHE
 FEWEDEL PRAEGLGTSETAERLGRGCMWDVTGEDGHHWRVFRMGPREQRVDMTVIEPYKKVLSHGGYHGD
 GLNAVILFASCYLPRSSIPNYTYVMEHLFRYMGVLTLELLVAENYLLVHLSGGTSRAQVPPLSWIRQCYRT
 LDRRLRKNLRALVVVHATWYVKAFLALLRPFISSKFTRKIRFLDSL GELAQQLISLDQVHIPEAVRQLDRD
 LHGSGGT

TRTRPLEQKLISEEDLAANDILDYKDDDDKV

Tag:	C-Myc/DDK
Purity:	> 80% as determined by SDS-PAGE and Coomassie blue staining
Concentration:	>0.05 µg/µL as determined by microplate BCA method
Labeling Method:	Labeled with [U- ¹³ C ₆ , ¹⁵ N ₄]-L-Arginine and [U- ¹³ C ₆ , ¹⁵ N ₂]-L-Lysine
Buffer:	25 mM Tris-HCl, 100 mM glycine, pH 7.3
Storage:	Store at -80°C. Avoid repeated freeze-thaw cycles.
Stability:	Stable for 3 months from receipt of products under proper storage and handling conditions.
RefSeq:	<u>NP_612122</u>
RefSeq Size:	2160
RefSeq ORF:	1071
Synonyms:	BNIP-S; BNIP-Salpha; BNIP-Sbeta; BNIPL-1; BNIPL-2; BNIPL1; BNIPL2; BNIPS; PP753
Locus ID:	149428

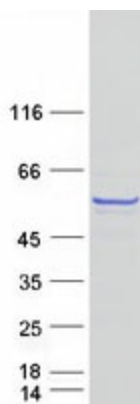

[View online »](#)

UniProt ID: [Q7Z465](#)

Cytogenetics: 1q21.3

Summary: The protein encoded by this gene interacts with several other proteins, such as BCL2, ARHGAP1, MIF and GFER. It may function as a bridge molecule between BCL2 and ARHGAP1/CDC42 in promoting cell death. Alternatively spliced transcript variants encoding different isoforms have been described for this gene. [provided by RefSeq, Aug 2011]

Product images:



Coomassie blue staining of purified BNIPL protein (Cat# [TP306811]). The protein was produced from HEK293T cells transfected with BNIPL cDNA clone (Cat# [RC206811]) using MegaTran 2.0 (Cat# [TT210002]).