

## Product datasheet for PH306799

### TAFA1 (NM\_213609) Human Mass Spec Standard

#### Product data:

Product Type:	Mass Spec Standards
Description:	FAM19A1 MS Standard C13 and N15-labeled recombinant protein (NP_998774)
Species:	Human
Expression Host:	HEK293
Expression cDNA Clone or AA Sequence:	RC206799
Predicted MW:	14.9 kDa
Protein Sequence:	>RC206799 protein sequence <b>Red</b> =Cloning site <b>Green</b> =Tags(s)  MAMVSAMSWVLYLWISACAMLLCHGSLQHTFQQHHLHRPEGGTCEVIAAHRCCNKNRIEERSQTVKCSCL PGKVAGTTRNRPSCVDASIVIGKWWCEMEPCLEGECKTLPDMSGWMCATGNKIKITTRIHPR  <b>TR</b> TRPLEQKLISEEDLAANDILDYKDDDDKV
Tag:	C-Myc/DDK
Purity:	> 80% as determined by SDS-PAGE and Coomassie blue staining
Concentration:	>0.05 µg/µL as determined by microplate BCA method
Labeling Method:	Labeled with [U- 13C6, 15N4]-L-Arginine and [U- 13C6, 15N2]-L-Lysine
Buffer:	25 mM Tris-HCl, 100 mM glycine, pH 7.3
Storage:	Store at -80°C. Avoid repeated freeze-thaw cycles.
Stability:	Stable for 3 months from receipt of products under proper storage and handling conditions.
RefSeq:	<a href="#">NP_998774</a>
RefSeq Size:	2032
RefSeq ORF:	399
Synonyms:	FAM19A1; TAFA-1
Locus ID:	407738
UniProt ID:	<a href="#">Q7Z5A9</a>
Cytogenetics:	3p14.1



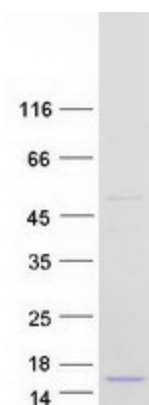
[View online »](#)

**Summary:**

This gene is a member of the TFAA family which is composed of five highly homologous genes that encode small secreted proteins. These proteins contain conserved cysteine residues at fixed positions, and are distantly related to MIP-1alpha, a member of the CC-chemokine family. The TFAA proteins are predominantly expressed in specific regions of the brain, and are postulated to function as brain-specific chemokines or neurokines that act as regulators of immune and nervous cells. [provided by RefSeq, Jul 2008]

**Protein Families:**

Secreted Protein, Transmembrane

**Product images:**

Coomassie blue staining of purified TFAA1 protein (Cat# [TP306799]). The protein was produced from HEK293T cells transfected with TFAA1 cDNA clone (Cat# [RC206799]) using MegaTran 2.0 (Cat# [TT210002]).