

Product datasheet for PH306791

SENP8 (NM_145204) Human Mass Spec Standard

Product data:

Product Type:	Mass Spec Standards
Description:	SENP8 MS Standard C13 and N15-labeled recombinant protein (NP_660205)
Species:	Human
Expression Host:	HEK293
Expression cDNA Clone or AA Sequence:	RC206791
Predicted MW:	24.1 kDa
Protein Sequence:	>RC206791 protein sequence Red=Cloning site Green=Tags(s) MDPVVLSYMDSLRLRQSDVSLDPSPWLNNDHIIGFAFEYFANSQFHDCSDHVSFISPEVTQFIKCTSNPAE IAMFLEPLDLPNKRIVFLAINDNSNQAAGGTHWSLLVYLQDKNSFFHYDSHSRSNSVHAKQVAEKLEAFL GRKGDKLA FVEEKAPAQQNSYDCGMVVICNTEALCQNFRRQQTESLLQLLTPAYITKKRGEWKDLIATLA KK TRTRPLEQKLI SEEDLAANDILDYKDDDDKV
Tag:	C-Myc/DDK
Purity:	> 80% as determined by SDS-PAGE and Coomassie blue staining
Concentration:	>0.05 µg/µL as determined by microplate BCA method
Labeling Method:	Labeled with [U- 13C6, 15N4]-L-Arginine and [U- 13C6, 15N2]-L-Lysine
Buffer:	25 mM Tris-HCl, 100 mM glycine, pH 7.3
Storage:	Store at -80°C. Avoid repeated freeze-thaw cycles.
Stability:	Stable for 3 months from receipt of products under proper storage and handling conditions.
RefSeq:	NP_660205
RefSeq Size:	1569
RefSeq ORF:	636
Synonyms:	DEN1; NEDP1; PRSC2
Locus ID:	123228
UniProt ID:	Q96LD8 , A8K8D3



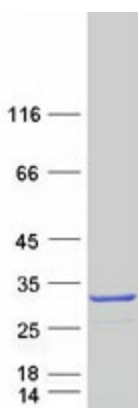
[View online »](#)

Cytogenetics: 15q23

Summary: This gene encodes a cysteine protease that is a member of the sentrin-specific protease family. The encoded protein is involved in processing and deconjugation of the ubiquitin-like protein termed, neural precursor cell expressed developmentally downregulated 8. Alternate splicing results in multiple transcript variants.[provided by RefSeq, Oct 2009]

Protein Families: Druggable Genome, Protease

Product images:



Coomassie blue staining of purified SENP8 protein (Cat# [TP306791]). The protein was produced from HEK293T cells transfected with SENP8 cDNA clone (Cat# [RC206791]) using MegaTran 2.0 (Cat# [TT210002]).