

Product datasheet for PH306780

LRG1 (NM_052972) Human Mass Spec Standard

Product data:

Product Type:	Mass Spec Standards
Description:	LRG1 MS Standard C13 and N15-labeled recombinant protein (NP_443204)
Species:	Human
Expression Host:	HEK293
Expression cDNA Clone or AA Sequence:	RC206780
Predicted MW:	38.2 kDa
Protein Sequence:	>RC206780 protein sequence Red =Cloning site Green =Tags(s)

MSSWSRQRPKSPGGIQPHVSRTLFLLLLLAASAWGVTLSPKDCQVFRSDHGSSISCQPPAEIPGYLPADT
 VHLAVEFFNLTHLPANLLQGASKLQELHLSSNGLESLSPEFLRPVQLRVLDLTRNALTGLPSGLFQASA
 TLDLTVLKENQLEVLEVSUHLGLKALGHLDLSGNRLRKLPPGLLANFTLLRDLGENQLETLPDLLRG
 PLQLERLHLEGKQLQVLGKDLLLPQPDRLYLFLNGNKLARVAAGAFQGLRQLDMLDLNNLSASVPEGLW
 ASLGQPNWDMRDGFDISGNPWICDQNLSDLYRWLQAQKDKMFSQNDTRCAGPEAVKGQTLLAVAKSQ

TRTRPLEQKLISEEDLAANDILDYKDDDDKV

Tag:	C-Myc/DDK
Purity:	> 80% as determined by SDS-PAGE and Coomassie blue staining
Concentration:	>0.05 µg/µL as determined by microplate BCA method
Labeling Method:	Labeled with [U- ¹³ C ₆ , ¹⁵ N ₄]-L-Arginine and [U- ¹³ C ₆ , ¹⁵ N ₂]-L-Lysine
Buffer:	25 mM Tris-HCl, 100 mM glycine, pH 7.3
Storage:	Store at -80°C. Avoid repeated freeze-thaw cycles.
Stability:	Stable for 3 months from receipt of products under proper storage and handling conditions.
RefSeq:	<u>NP_443204</u>
RefSeq Size:	1780
RefSeq ORF:	1041
Synonyms:	HMFT1766; LRG
Locus ID:	116844


[View online »](#)

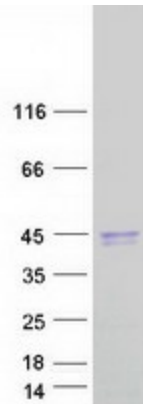
UniProt ID: P02750, Q68CK4

Cytogenetics: 19p13.3

Summary: The leucine-rich repeat (LRR) family of proteins, including LRG1, have been shown to be involved in protein-protein interaction, signal transduction, and cell adhesion and development. LRG1 is expressed during granulocyte differentiation (O'Donnell et al., 2002 [PubMed 12223515]).[supplied by OMIM, Mar 2008]

Protein Families: Secreted Protein

Product images:



Coomassie blue staining of purified LRG1 protein (Cat# [TP306780]). The protein was produced from HEK293T cells transfected with LRG1 cDNA clone (Cat# [RC206780]) using MegaTran 2.0 (Cat# [TT210002]).