

Product datasheet for PH306775

Ephexin 1 (NGEF) (NM_019850) Human Mass Spec Standard

Product data:

Product Type:	Mass Spec Standards
Description:	NGEF MS Standard C13 and N15-labeled recombinant protein (NP_062824)
Species:	Human
Expression Host:	HEK293
Expression cDNA Clone or AA Sequence:	RC206775
Predicted MW:	82.5 kDa
Protein Sequence:	>RC206775 protein sequence Red=Cloning site Green=Tags(s)

METRESEDLKTRRKSASDQWNTDNEPAKVPELLPEKEETSQADQDIQDKEPHCHIPIKRNSIFNRSIR
RKSKAKARDNPERNASCLADSQDNGKSVNEPLTLNIPWSRTPPCRTAMQTDPGAQEMSESSSTPGNGATP
EEWPALADSPPTLLEALRMIHPIPADSWRNLEIQIGLLYQEYRDKSTLQEIETRRQQDAEIEDNTNGSPA
SEDTPEEEEEEEEEEPASPPERKTLPQICLLSNPHSRFNLWQDLPEIRSSGVLEILQPEEIKLQEAMFE
LVTSEASYKSLNLLVSHFMENERIRKILHPSEAHILFSNVLDVLAVSERFLLLEHRMEENIVISDVCD
IVYRYAADHFSVYITYVSNQTYQERTYKQLLQEKAAFRELIAQLELDPKCRGLPFSSFLILPFQRITRLK
LLVQNILKRVEERSERECTALDAHKELEMVVKACNEGVRKMSRTEQMISIQKKMEFKIKSVPIISHRWL
LKQGELQQMSGPKTSRTLRTKFLFHEIYLFNDLLVICRQIPGDQYQVFD SAPRGLLRVEELEDQGQTL
ANVFILRLLENADDREATYMLKASSQSEMKRWMTSLAPNRRTKFVSFTSRLLDPCQVQCVHPYVAQPDE
LTLELADILNILDKTDDGWIFGERLHDQERGWFPSSMTEEILNPKIRSQNLKECFRVHKMDDPQRSQNKD
RRKLGSRNRQ

TRTRPLEQKLISEEDLAANDILDYKDDDDKV

Tag:	C-Myc/DDK
Purity:	> 80% as determined by SDS-PAGE and Coomassie blue staining
Concentration:	>0.05 µg/µL as determined by microplate BCA method
Labeling Method:	Labeled with [U- 13C6, 15N4]-L-Arginine and [U- 13C6, 15N2]-L-Lysine
Buffer:	25 mM Tris-HCl, 100 mM glycine, pH 7.3
Storage:	Store at -80°C. Avoid repeated freeze-thaw cycles.
Stability:	Stable for 3 months from receipt of products under proper storage and handling conditions.
RefSeq:	NP_062824



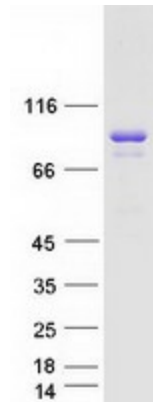
[View online »](#)

RefSeq Size:	3184
RefSeq ORF:	2130
Synonyms:	ARHGEF27; EPHEXIN
Locus ID:	25791
UniProt ID:	Q8N5V2
Cytogenetics:	2q37.1

Summary: Acts as a guanine nucleotide exchange factor (GEF) which differentially activates the GTPases RHOA, RAC1 and CDC42. Plays a role in axon guidance regulating ephrin-induced growth cone collapse and dendritic spine morphogenesis. Upon activation by ephrin through EPHA4, the GEF activity switches toward RHOA resulting in its activation. Activated RHOA promotes cone retraction at the expense of RAC1- and CDC42-stimulated growth cone extension (By similarity).[UniProtKB/Swiss-Prot Function]

Protein Pathways: Axon guidance

Product images:



Coomassie blue staining of purified NGEF protein (Cat# [TP306775]). The protein was produced from HEK293T cells transfected with NGEF cDNA clone (Cat# [RC206775]) using MegaTran 2.0 (Cat# [TT210002]).