

Product datasheet for PH306765

DUSP6 (NM_001946) Human Mass Spec Standard

Product data:

Product Type:	Mass Spec Standards
Description:	DUSP6 MS Standard C13 and N15-labeled recombinant protein (NP_001937)
Species:	Human
Expression Host:	HEK293
Expression cDNA Clone or AA Sequence:	RC206765
Predicted MW:	42.3 kDa
Protein Sequence:	>RC206765 protein sequence Red=Cloning site Green=Tags(s)

MIDTLRPVPFASEMAISKTVAWLNEQLELGNERLLLMDCRPQEL YESSHIESAINVAIPGIMLRRLQKGN
LPVRALFTRGEDRDRFTRRCGTDTVVL YDESSDWNENTGGESVLGLLLKCLKDEGCRAFYLEGGFSKFQ
AEFSLHCETNLDGSCSSSPPLPVLGLGGLRISSDSSDIESDLDRDPNSATDSDGSPLSNSQPSFPVEI
LPFLYLGC AKDSTNLDVLEEFGIKYILNVTPNLPNLFENAGEFKYKQIPI SDHWSQNL SQFFPEAISFID
EARGKNCGLVHCLAGISRSVTVVAYLMQKLNLSMNDAYDIVKMKKSNISPNFNFMGQLLDFERTLGLS
SPCDNRVPAQQLYFTTPSNQNVYQVDSLQST

TRTRPLEQKLI SEEDLAANDILDYKDDDDKV

Tag:	C-Myc/DDK
Purity:	> 80% as determined by SDS-PAGE and Coomassie blue staining
Concentration:	>0.05 µg/µL as determined by microplate BCA method
Labeling Method:	Labeled with [U- ¹³ C ₆ , ¹⁵ N ₄]-L-Arginine and [U- ¹³ C ₆ , ¹⁵ N ₂]-L-Lysine
Buffer:	25 mM Tris-HCl, 100 mM glycine, pH 7.3
Storage:	Store at -80°C. Avoid repeated freeze-thaw cycles.
Stability:	Stable for 3 months from receipt of products under proper storage and handling conditions.
RefSeq:	<u>NP_001937</u>
RefSeq Size:	3395
RefSeq ORF:	1143
Synonyms:	HH19; MKP3; PYST1
Locus ID:	1848



[View online »](#)

UniProt ID: [Q16828](#), [A0A024RBC1](#)

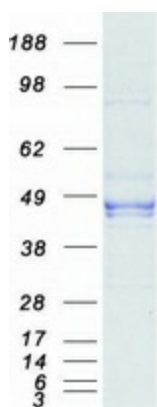
Cytogenetics: 12q21.33

Summary: The protein encoded by this gene is a member of the dual specificity protein phosphatase subfamily. These phosphatases inactivate their target kinases by dephosphorylating both the phosphoserine/threonine and phosphotyrosine residues. They negatively regulate members of the mitogen-activated protein (MAP) kinase superfamily (MAPK/ERK, SAPK/JNK, p38), which are associated with cellular proliferation and differentiation. Different members of the family of dual specificity phosphatases show distinct substrate specificities for various MAP kinases, different tissue distribution and subcellular localization, and different modes of inducibility of their expression by extracellular stimuli. This gene product inactivates ERK2, is expressed in a variety of tissues with the highest levels in heart and pancreas, and unlike most other members of this family, is localized in the cytoplasm. Mutations in this gene have been associated with congenital hypogonadotropic hypogonadism. Alternatively spliced transcript variants have been found for this gene. [provided by RefSeq, Jan 2014]

Protein Families: Druggable Genome, Phosphatase

Protein Pathways: MAPK signaling pathway

Product images:



Coomassie blue staining of purified DUSP6 protein (Cat# [TP306765]). The protein was produced from HEK293T cells transfected with DUSP6 cDNA clone (Cat# [RC206765]) using MegaTran 2.0 (Cat# [TT210002]).