

Product datasheet for PH306735

IGSF11 (NM_152538) Human Mass Spec Standard

Product data:

Product Type:	Mass Spec Standards
Description:	IGSF11 MS Standard C13 and N15-labeled recombinant protein (NP_689751)
Species:	Human
Expression Host:	HEK293
Expression cDNA Clone or AA Sequence:	RC206735
Predicted MW:	46.2 kDa
Protein Sequence:	>RC206735 protein sequence Red=Cloning site Green=Tags(s)

MSLVELLWVNCFSRTGVAASLEVSESPGSIQVARGQTAVLPCTFTTSAALINLNVIMVTPLSNANQPE
QVILYQGGQMGDFGAPRFHGRVGFGTMPATNVSIFINNTQLSDTGTQCLVNNLPDIGGRNIGVTGLTVL
VPPSAPHCQIQGSQDIGSDVILLCSSEEGIPRPTYLWEKLDNTLKLPTATQDQVQGTVTIRNISALSSG
LYQCVASNAIGTSTCLLDLQVISPPRNIGLIAGAIGTGAVIIIFCIALILGAFFYWRSKNEEEEEIEIP
NEIREDDLPPKCSSAKAFHTEISSDNNTLTSSNAYNSRYWSNPNKVHRNTESVSHFSDLGQSFSFHSGN
ANIPSIYANGTHLVPGQHKTLVVTANRGSSPQVMSRSNGSVSRKPRPPHHSYTI SHATLERIGAVPVMV
PAQSRAGSLV

TRTRPLEQKLI SEEDLAANDILDYKDDDDKV

Tag:	C-Myc/DDK
Purity:	> 80% as determined by SDS-PAGE and Coomassie blue staining
Concentration:	>0.05 µg/µL as determined by microplate BCA method
Labeling Method:	Labeled with [U- ¹³ C ₆ , ¹⁵ N ₄]-L-Arginine and [U- ¹³ C ₆ , ¹⁵ N ₂]-L-Lysine
Buffer:	25 mM Tris-HCl, 100 mM glycine, pH 7.3
Storage:	Store at -80°C. Avoid repeated freeze-thaw cycles.
Stability:	Stable for 3 months from receipt of products under proper storage and handling conditions.
RefSeq:	<u>NP_689751</u>
RefSeq Size:	3577
RefSeq ORF:	1290
Synonyms:	BT-IgSF; CT119; CXADRL1; Igsf13; VSIG3



[View online »](#)

Locus ID: 152404

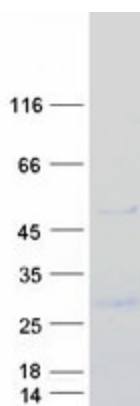
UniProt ID: [Q5DX21](#)

Cytogenetics: 3q13.32

Summary: IGSF11 is an immunoglobulin (Ig) superfamily member that is preferentially expressed in brain and testis. It shares significant homology with coxsackievirus and adenovirus receptor (CXADR; MIM 602621) and endothelial cell-selective adhesion molecule (ESAM).[supplied by OMIM, Apr 2005]

Protein Families: Transmembrane

Product images:



Coomassie blue staining of purified IGSF11 protein (Cat# [TP306735]). The protein was produced from HEK293T cells transfected with IGSF11 cDNA clone (Cat# [RC206735]) using MegaTran 2.0 (Cat# [TT210002]).