

Product datasheet for PH306713

NPTX2 (NM_002523) Human Mass Spec Standard

Product data:

| | |
|---------------------------------------|---|
| Product Type: | Mass Spec Standards |
| Description: | NPTX2 MS Standard C13 and N15-labeled recombinant protein (NP_002514) |
| Species: | Human |
| Expression Host: | HEK293 |
| Expression cDNA Clone or AA Sequence: | RC206713 |
| Predicted MW: | 46.9 kDa |
| Protein Sequence: | >RC206713 representing NM_002523 Red=Cloning site Green=Tags(s) |

MLALLAASVALAVAAGAQDSPAPGSRFVCTALPPEAVHAGCPLPAMPQGGGAQSPEEELRAAVLQLRETV
VQQKETLGAQREAIREL TGKLARCEGLAGGKARGAGATGKDTMGDLPRDPGHVVEQLSRSLQTLKDRLES
LEHQLRANVSNAGLPGDFREVLQQR LGELERQLLRKVAELEDKSL LHNETSAHRQKTESTLNALLQRVT
ELERGNSAFKSPDAFKVSLPLRTNYLYGKIKKTLPELYAFTICLWLRSSASPGIGT PFSYAVPGQANEIV
LIEWGNPIELL INDKVAQLPLFVSDGKWHHCVTWTRDGMWEAFQDGEKLG TGENLAPWHPIKPGGVL
ILGQEQDTVGGRFDATQAFV GELSQFNIWDRV LRAQEI VNIANCSTNMPGNIIPWVDNNVDVFGGASKWP
VETCEERLLDL

TRTRPLEQKLI SEEDLAANDILDYKDDDDKV

| | |
|------------------|--|
| Tag: | C-Myc/DDK |
| Purity: | > 80% as determined by SDS-PAGE and Coomassie blue staining |
| Concentration: | >0.05 µg/µL as determined by microplate BCA method |
| Labeling Method: | Labeled with [U- ¹³ C ₆ , ¹⁵ N ₄]-L-Arginine and [U- ¹³ C ₆ , ¹⁵ N ₂]-L-Lysine |
| Buffer: | 25 mM Tris-HCl, 100 mM glycine, pH 7.3 |
| Storage: | Store at -80°C. Avoid repeated freeze-thaw cycles. |
| Stability: | Stable for 3 months from receipt of products under proper storage and handling conditions. |
| RefSeq: | <u>NP_002514</u> |
| RefSeq Size: | 2746 |
| RefSeq ORF: | 1293 |
| Synonyms: | NARP; NP-II; NP2 |



[View online »](#)

Locus ID: 4885

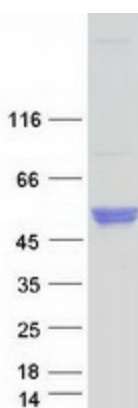
UniProt ID: [P47972](#)

Cytogenetics: 7q22.1

Summary: This gene encodes a member of the family of neuronal petraxins, synaptic proteins that are related to C-reactive protein. This protein is involved in excitatory synapse formation. It also plays a role in clustering of alpha-amino-3-hydroxy-5-methyl-4-isoxazolepropionic acid (AMPA)-type glutamate receptors at established synapses, resulting in non-apoptotic cell death of dopaminergic nerve cells. Up-regulation of this gene in Parkinson disease (PD) tissues suggests that the protein may be involved in the pathology of PD. [provided by RefSeq, Feb 2009]

Protein Families: Secreted Protein

Product images:



Coomassie blue staining of purified NPTX2 protein (Cat# [TP306713]). The protein was produced from HEK293T cells transfected with NPTX2 cDNA clone (Cat# [RC206713]) using MegaTran 2.0 (Cat# [TT210002]).