

Product datasheet for PH306694

TRY1 (PRSS58) (NM_001001317) Human Mass Spec Standard

Product data:

Product Type:	Mass Spec Standards
Description:	TRYX3 MS Standard C13 and N15-labeled recombinant protein (NP_001001317)
Species:	Human
Expression Host:	HEK293
Expression cDNA Clone or AA Sequence:	RC206694
Predicted MW:	27.1 kDa
Protein Sequence:	>RC206694 protein sequence Red=Cloning site Green=Tags(s) MKFILLWALLNLTVALAFNPDYTVSSTPPYLVLKSDYLPAGVLIHPLWVITAAHCNLPKLRVILGVTI PADSNEKHLQVIGYEKMIHHPFVSVTSIDHDIMLIKTEAELNDYVKLANLPYQTISENTMCSVSTWSY NVCDIYKEPDSLQTVNISVISKPQCRDAYKTYNITENMLCVGIVPGRRQPCKEVSAAPAICNGMLQGILS FADGCVLRADVGIYAKIFYIYIPWIENVIQNN TRTRPLEQKLI SEEDLAANDILDYKDDDDKV
Tag:	C-Myc/DDK
Purity:	> 80% as determined by SDS-PAGE and Coomassie blue staining
Concentration:	>0.05 µg/µL as determined by microplate BCA method
Labeling Method:	Labeled with [U- ¹³ C ₆ , ¹⁵ N ₄]-L-Arginine and [U- ¹³ C ₆ , ¹⁵ N ₂]-L-Lysine
Buffer:	25 mM Tris-HCl, 100 mM glycine, pH 7.3
Storage:	Store at -80°C. Avoid repeated freeze-thaw cycles.
Stability:	Stable for 3 months from receipt of products under proper storage and handling conditions.
RefSeq:	NP_001001317
RefSeq Size:	923
RefSeq ORF:	723
Synonyms:	PRSS1; TRY1; TRYX3; UNQ2540
Locus ID:	136541
UniProt ID:	Q8IYP2



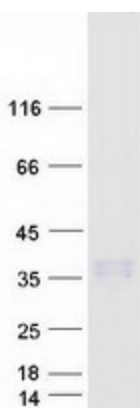
[View online »](#)

Cytogenetics: 7q34

Summary: This gene encodes a member of the trypsin family of serine proteases. This gene and several related trypsinogen genes are localized to the T cell receptor beta locus on chromosome 7. This gene was previously described as a trypsinogen-like pseudogene, but it is now thought to be a protein-coding gene. [provided by RefSeq, Jul 2008]

Protein Families: Druggable Genome

Product images:



Coomassie blue staining of purified PRSS58 protein (Cat# [TP306694]). The protein was produced from HEK293T cells transfected with PRSS58 cDNA clone (Cat# [RC206694]) using MegaTran 2.0 (Cat# [TT210002]).