

Product datasheet for PH306692

PTGR1 (NM_012212) Human Mass Spec Standard

Product data:

Product Type:	Mass Spec Standards
Description:	PTGR1 MS Standard C13 and N15-labeled recombinant protein (NP_036344)
Species:	Human
Expression Host:	HEK293
Expression cDNA Clone or AA Sequence:	RC206692
Predicted MW:	35.9 kDa
Protein Sequence:	>RC206692 protein sequence Red=Cloning site Green=Tags(s)

MVRTKTWTLKKHFVGYPTNSDFELKTSSELPLKNGEVLLLEALFLTVDPYMRVAAKRLKEGDTMMGQQVAK
VVESKNVALPKGTIVLASPGWTTTHSISDGKDLEKLLTEWPDTIPLSLALGTVGMPGLTAYFGLLEICGVK
GGETVMVNAAGAVGSVVGQIAKLKCKVVGAVGSDEKVAYLQKLGFDVVFNYKTVESLEETLKKASPDG
YDCYFDNVGGEFSNTVIGQMCKFGRIAICGAISTYNRTGPLPPGPPPEIYIYQELRMEAFVYYRWQGDAR
QKALKDLLKQVLEGIQYKEYIIEGFENMPAAFMGMLKGDNLGKTIVKA

TRTRPLEQKLISEEDLAANDILDYKDDDDKV

Tag:	C-Myc/DDK
Purity:	> 80% as determined by SDS-PAGE and Coomassie blue staining
Concentration:	>0.05 µg/µL as determined by microplate BCA method
Labeling Method:	Labeled with [U- ¹³ C ₆ , ¹⁵ N ₄]-L-Arginine and [U- ¹³ C ₆ , ¹⁵ N ₂]-L-Lysine
Buffer:	25 mM Tris-HCl, 100 mM glycine, pH 7.3
Storage:	Store at -80°C. Avoid repeated freeze-thaw cycles.
Stability:	Stable for 3 months from receipt of products under proper storage and handling conditions.
RefSeq:	NP_036344
RefSeq Size:	1249
RefSeq ORF:	987
Synonyms:	DIG-1; LTB4DH; PGR1; ZADH3
Locus ID:	22949



[View online »](#)

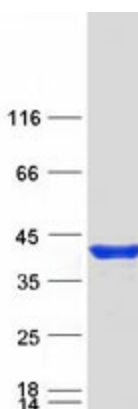
UniProt ID: [Q14914](#)

Cytogenetics: 9q31.3

Summary: This gene encodes an enzyme that is involved in the inactivation of the chemotactic factor, leukotriene B4. The encoded protein specifically catalyzes the NADP+ dependent conversion of leukotriene B4 to 12-oxo-leukotriene B4. A pseudogene of this gene is found on chromosome 1. Alternative splicing results in multiple transcript variants. [provided by RefSeq, Mar 2009]

Protein Families: Druggable Genome

Product images:



Coomassie blue staining of purified PTGR1 protein (Cat# [TP306692]). The protein was produced from HEK293T cells transfected with PTGR1 cDNA clone (Cat# [RC206692]) using MegaTran 2.0 (Cat# [TT210002]).