

## Product datasheet for PH306683

### ERP27 (NM\_152321) Human Mass Spec Standard

#### Product data:

Product Type:	Mass Spec Standards
Description:	ERP27 MS Standard C13 and N15-labeled recombinant protein (NP_689534)
Species:	Human
Expression Host:	HEK293
Expression cDNA Clone or AA Sequence:	RC206683
Predicted MW:	30.5 kDa
Protein Sequence:	>RC206683 protein sequence Red=Cloning site Green=Tags(s)  MEAAPSRFMFLFLLLTCELAEEVAAEVEKSSDGPAAQEPTWLTDPVAAMEFIAATEVAVIGFFQDLEIP AVPILHSMVQKFPVSGFISTDSEVLTHYNITGNTICLFRVDNEQLNLEDEDIESIDATKLSRFIEINS LHMVTEYNPVTVIGLFNSVIQIHLLIMNKASPEYEENMHRYQKAAKLFQKILFILDVDSGMKENGKVIS FFKLKESQLPALAIYQTLDDDEWDTLPTAEVSVEHVQNFCDGFLSGKLLKENRESEGKTPKVEL  TRTRPLEQKLI SEEDLAANDILDYKDDDDKV
Tag:	C-Myc/DDK
Purity:	> 80% as determined by SDS-PAGE and Coomassie blue staining
Concentration:	>0.05 µg/µL as determined by microplate BCA method
Labeling Method:	Labeled with [U- <sup>13</sup> C <sub>6</sub> , <sup>15</sup> N <sub>4</sub> ]-L-Arginine and [U- <sup>13</sup> C <sub>6</sub> , <sup>15</sup> N <sub>2</sub> ]-L-Lysine
Buffer:	25 mM Tris-HCl, 100 mM glycine, pH 7.3
Storage:	Store at -80°C. Avoid repeated freeze-thaw cycles.
Stability:	Stable for 3 months from receipt of products under proper storage and handling conditions.
RefSeq:	<a href="#">NP_689534</a>
RefSeq Size:	1581
RefSeq ORF:	819
Synonyms:	C12orf46; PDIA8
Locus ID:	121506
UniProt ID:	<a href="#">Q96DN0</a>

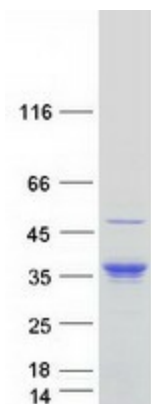


[View online »](#)

Cytogenetics: 12p12.3

**Summary:** This gene encodes a noncatalytic member of the protein disulfide isomerase (PDI) family of endoplasmic reticulum (ER) proteins. The canonical protein has an N-terminal signal sequence, two thioredoxin (TRX)-like domains and a C-terminal ER-retention sequence. Alternative splicing results in multiple transcript variants encoding distinct isoforms; some of which lack domains present in the canonical protein. [provided by RefSeq, Dec 2016]

**Product images:**



Coomassie blue staining of purified ERP27 protein (Cat# [TP306683]). The protein was produced from HEK293T cells transfected with ERP27 cDNA clone (Cat# [RC206683]) using MegaTran 2.0 (Cat# [TT210002]).