

Product datasheet for PH306671

IZUMO1 (NM_182575) Human Mass Spec Standard

Product data:

Product Type:	Mass Spec Standards
Description:	IZUMO1 MS Standard C13 and N15-labeled recombinant protein (NP_872381)
Species:	Human
Expression Host:	HEK293
Expression cDNA Clone or AA Sequence:	RC206671
Predicted MW:	39 kDa
Protein Sequence:	>RC206671 protein sequence Red=Cloning site Green=Tags(s)

MGPHTLLCAALAGCLLPAEGCVICDPSVVLALKSLEKDYLPGHLDAKHHKAMMVERNVAVKDFQELSLN
EDAYMGVVDEATLQKGSWSLLKDLKRITDSDVKGDLFVKELFWMLHLQKETFATYVARFQKEAYCPNKCG
VMLQTLIWCKNCKKEVHACRKSYPDCGERNVEVPQMEDMILDCELNWHQASEGLTDYSFYRVWGNNTETLV
SKGKEATLTKPMVGPEDAGSYRCELGSVNSSPATIINFHVTVLPKMIKEEKPSPNIVTPGEATTESSISL
QPLQPEKMLASRLLGLLIGSLALITGLTFAIFRRRKVIDFIKSSLFGLGSGVAEQTPVPEKATDSRQQ

TRTRPLEQKLISEEDLAANDILDYKDDDDKV

Tag:	C-Myc/DDK
Purity:	> 80% as determined by SDS-PAGE and Coomassie blue staining
Concentration:	>0.05 µg/µL as determined by microplate BCA method
Labeling Method:	Labeled with [U- ¹³ C ₆ , ¹⁵ N ₄]-L-Arginine and [U- ¹³ C ₆ , ¹⁵ N ₂]-L-Lysine
Buffer:	25 mM Tris-HCl, 100 mM glycine, pH 7.3
Storage:	Store at -80°C. Avoid repeated freeze-thaw cycles.
Stability:	Stable for 3 months from receipt of products under proper storage and handling conditions.
RefSeq:	NP_872381
RefSeq Size:	1621
RefSeq ORF:	1050
Synonyms:	IZUMO; OBF
Locus ID:	284359



[View online »](#)

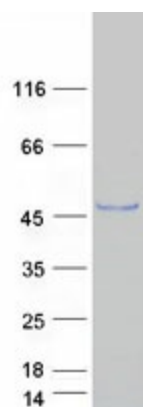
UniProt ID: [Q8IYV9](#)

Cytogenetics: 19q13.33

Summary: The sperm-specific protein Izumo, named for a Japanese shrine dedicated to marriage, is essential for sperm-egg plasma membrane binding and fusion (Inoue et al., 2005 [PubMed 15759005]).[supplied by OMIM, Mar 2008]

Protein Families: Transmembrane

Product images:



Coomassie blue staining of purified IZUMO1 protein (Cat# [TP306671]). The protein was produced from HEK293T cells transfected with IZUMO1 cDNA clone (Cat# [RC206671]) using MegaTran 2.0 (Cat# [TT210002]).