

Product datasheet for PH306668

RTL6 (NM_032287) Human Mass Spec Standard

Product data:

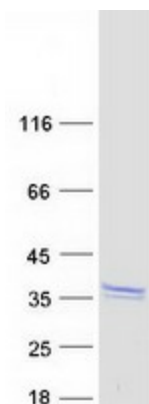
Product Type:	Mass Spec Standards
Description:	LDOC1L MS Standard C13 and N15-labeled recombinant protein (NP_115663)
Species:	Human
Expression Host:	HEK293
Expression cDNA Clone or AA Sequence:	RC206668
Predicted MW:	26.2 kDa
Protein Sequence:	>RC206668 protein sequence Red=Cloning site Green=Tags(s) MVQPQTSKAESPALAASPNAQMDDVIDTLTSLRLTNSALRREASTLRAEKANLTNMLLESVMAELTLLRTR ARIPGALQITPPISSITSNNGTRPMTTPPTSLPEPFGDPGRLAGFLMQMDRFMIFQASRFPGEAERVAFL VSRLTGEAEKWAIPHMQPDSPLRNQYQFLAELRRTYKSPLRHARRAQIRKTSASNRAVRERQMLCRQLA SAGTGPCPVHPASNGTSPAPALPARARNL TRTRPLEQKLISEEDLAANDILDYKDDDDKV
Tag:	C-Myc/DDK
Purity:	> 80% as determined by SDS-PAGE and Coomassie blue staining
Concentration:	>0.05 µg/µL as determined by microplate BCA method
Labeling Method:	Labeled with [U- ¹³ C ₆ , ¹⁵ N ₄]-L-Arginine and [U- ¹³ C ₆ , ¹⁵ N ₂]-L-Lysine
Buffer:	25 mM Tris-HCl, 100 mM glycine, pH 7.3
Storage:	Store at -80°C. Avoid repeated freeze-thaw cycles.
Stability:	Stable for 3 months from receipt of products under proper storage and handling conditions.
RefSeq:	NP_115663
RefSeq Size:	5355
RefSeq ORF:	717
Synonyms:	dj1033E15.2; LDOC1L; Mar6; Mart6; SIRH3
Locus ID:	84247
UniProt ID:	Q6ICC9 , Q9BQJ3



[View online »](#)

Cytogenetics: 22q13.31

Product images:



Coomassie blue staining of purified RTL6 protein (Cat# [TP306668]). The protein was produced from HEK293T cells transfected with RTL6 cDNA clone (Cat# [RC206668]) using MegaTran 2.0 (Cat# [TT210002]).