

Product datasheet for PH306643

ARH (LDLRAP1) (NM_015627) Human Mass Spec Standard

Product data:

Product Type:	Mass Spec Standards
Description:	LDLRAP1 MS Standard C13 and N15-labeled recombinant protein (NP_056442)
Species:	Human
Expression Host:	HEK293
Expression cDNA Clone or AA Sequence:	RC206643
Predicted MW:	33.7 kDa
Protein Sequence:	>RC206643 representing NM_015627 Red =Cloning site Green =Tags(s) MDALKSAGRALIRSPSLAKQSWGGRHRKLPENWTDRETLLLEGMLFSLKYLGMTLVEQPKGEELSA IKRIVATAKASGKQLQKVTLKVSPRGIILTDNLTNQLIENVSIYRISYCTADKMHDKVFAYIAQSQHNQS LECHAFLECTKRKMAQAVTLTVAQAFKVAFEFWQVSKEEKEKRDKASQEGGDVVGARQDCTPPLKSLVATG NLLDLEETAKAPLSTVSANTTNMDEVPRPQALSGSSVVWELDDGLDEAFSRLAQSRNPQVLDTGLTAQD MHYAQCLSPVDWDKPDSSGTEQDDLFSF TRTRPLEQKLISEEDLAANDILDYKDDDDKV
Tag:	C-Myc/DDK
Purity:	> 80% as determined by SDS-PAGE and Coomassie blue staining
Concentration:	>0.05 µg/µL as determined by microplate BCA method
Labeling Method:	Labeled with [U- ¹³ C ₆ , ¹⁵ N ₄]-L-Arginine and [U- ¹³ C ₆ , ¹⁵ N ₂]-L-Lysine
Buffer:	25 mM Tris-HCl, 100 mM glycine, pH 7.3
Storage:	Store at -80°C. Avoid repeated freeze-thaw cycles.
Stability:	Stable for 3 months from receipt of products under proper storage and handling conditions.
RefSeq:	NP_056442
RefSeq Size:	2862
RefSeq ORF:	924
Synonyms:	ARH; ARH1; ARH2; FHCB1; FHCB2; FHCL4
Locus ID:	26119



[View online »](#)

UniProt ID: [Q5SW96](#), [B3KR97](#)

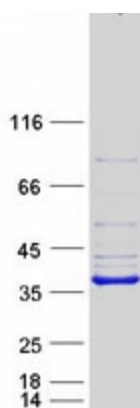
Cytogenetics: 1p36.11

Summary: The protein encoded by this gene is a cytosolic protein which contains a phosphotyrosine binding (PTD) domain. The PTD domain has been found to interact with the cytoplasmic tail of the LDL receptor. Mutations in this gene lead to LDL receptor malfunction and cause the disorder autosomal recessive hypercholesterolaemia. [provided by RefSeq, Jul 2008]

Protein Families: Druggable Genome

Protein Pathways: Endocytosis

Product images:



Coomassie blue staining of purified LDLRAP1 protein (Cat# [TP306643]). The protein was produced from HEK293T cells transfected with LDLRAP1 cDNA clone (Cat# [RC206643]) using MegaTran 2.0 (Cat# [TT210002]).