

## Product datasheet for PH306625

### PHETA1 (NM\_144671) Human Mass Spec Standard

#### Product data:

Product Type:	Mass Spec Standards
Description:	FAM109A MS Standard C13 and N15-labeled recombinant protein (NP_653272)
Species:	Human
Expression Host:	HEK293
Expression cDNA Clone or AA Sequence:	RC206625
Predicted MW:	27.2 kDa
Protein Sequence:	>RC206625 protein sequence Red=Cloning site Green=Tags(s)
	MKLNERSLAFYATCDAPVDNAGFLYKKGGRHAAYHRRWFLVLRGNMLFYFEDAASREPVGVIILEGCTVEL VEAAEEFAFAVRFAGTRARTYVLAAESQDAMEGWKALSRASFDYLRLLVRELEQQLAAVRGGGMALPQ PQPQSLPLPPSLPSALAPVPSLPSAPAPVPALPLPRRPSALPPKENGCAVWSTEATFRPGPEPPPPPPRR RASAPHGLDMPFARLHECYGQEIRALRGQWLSRVQP
	TRTRPLEQKLISEEDLAANDILDYKDDDDKV
Tag:	C-Myc/DDK
Purity:	> 80% as determined by SDS-PAGE and Coomassie blue staining
Concentration:	>0.05 µg/µL as determined by microplate BCA method
Labeling Method:	Labeled with [U- <sup>13</sup> C <sub>6</sub> , <sup>15</sup> N <sub>4</sub> ]-L-Arginine and [U- <sup>13</sup> C <sub>6</sub> , <sup>15</sup> N <sub>2</sub> ]-L-Lysine
Buffer:	25 mM Tris-HCl, 100 mM glycine, pH 7.3
Storage:	Store at -80°C. Avoid repeated freeze-thaw cycles.
Stability:	Stable for 3 months from receipt of products under proper storage and handling conditions.
RefSeq:	<a href="#">NP_653272</a>
RefSeq Size:	3168
RefSeq ORF:	747
Synonyms:	FAM109A; IPIP27A; SES1
Locus ID:	144717
UniProt ID:	<a href="#">Q8N4B1</a>

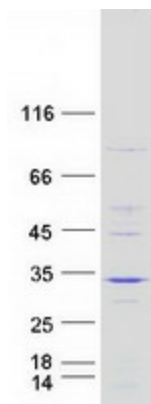


[View online »](#)

Cytogenetics: 12q24.12

**Summary:** This gene encodes a protein that localizes to the endosome and interacts with the enzyme, inositol polyphosphate 5-phosphatase OCRL-1. Alternate splicing results in multiple transcript variants. [provided by RefSeq, May 2010]

**Product images:**



Coomassie blue staining of purified PHETA1 protein (Cat# [TP306625]). The protein was produced from HEK293T cells transfected with PHETA1 cDNA clone (Cat# [RC206625]) using MegaTran 2.0 (Cat# [TT210002]).