

Product datasheet for PH306622

alpha 1 Fetoprotein (AFP) (NM_001134) Human Mass Spec Standard

Product data:

Product Type:	Mass Spec Standards
Description:	AFP MS Standard C13 and N15-labeled recombinant protein (NP_001125)
Species:	Human
Expression Host:	HEK293
Expression cDNA Clone or AA Sequence:	RC206622
Predicted MW:	68.7 kDa
Protein Sequence:	>RC206622 protein sequence Red=Cloning site Green=Tags(s)

MKWVESIFLIFLLNFTESTRHLRNEYGIASILDSYQCTAEISLADLATIFFAQFVQEATYKEVSKMVKDA
LTAIEKPTGDEQSSGLENQLPAFLEELCHEKEILEKYGHSDCCSQSEGRHNCFLAHKPTPASIFLQ
VPEPVTSCAEYEEDRETFMNFIEYIARRHPFLYAPTILLWAARYDKIIPSCCKAENAVECFQTKAATVT
KELRESSLLNQHACAVMKNFGTRTFQAITVTKLSQKFTKVNFTIEIQLVLDVAHVHEHCCRGDVLDCQD
GEKIMSYICSQQDTLSNKITECKLTTLARGQCIHAENDEKPEGLSPNLNRFLGDRDFNQFSSGEKNIF
LASFVHEYSRRHPQLAVSVILRVAKGYQELLEKCFQTENPLECQDKGEEELQKYIQESQALAKRSCGLFQ
KLGEYYLQNAFLVAYTKKAPQLTSELMAITRMAATAATCCQLSEDKLLACGEGAADIIGHLCIRHEM
TPVNPVGVCCTSSYANRRPCFSSLVDETYVPPAFSDDKFIHDKLCAQGVALQTMKQEFLLINLVKQK
PQITEEQLAIVADFSGLLEKCCQGEQEVCFAEEGQKLISKTRAALGV

TRTRPLEQKLISEEDLAANDILDYKDDDDKV

Tag:	C-Myc/DDK
Purity:	> 80% as determined by SDS-PAGE and Coomassie blue staining
Concentration:	>0.05 µg/µL as determined by microplate BCA method
Labeling Method:	Labeled with [U- ¹³ C ₆ , ¹⁵ N ₄]-L-Arginine and [U- ¹³ C ₆ , ¹⁵ N ₂]-L-Lysine
Buffer:	25 mM Tris-HCl, 100 mM glycine, pH 7.3
Storage:	Store at -80°C. Avoid repeated freeze-thaw cycles.
Stability:	Stable for 3 months from receipt of products under proper storage and handling conditions.
RefSeq:	NP_001125
RefSeq Size:	2057
RefSeq ORF:	1827



[View online »](#)

Synonyms: AFPD; FETA; HPAFP

Locus ID: 174

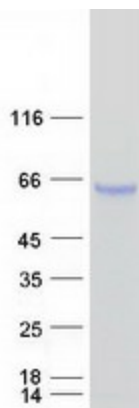
UniProt ID: [P02771](#)

Cytogenetics: 4q13.3

Summary: This gene encodes alpha-fetoprotein, a major plasma protein produced by the yolk sac and the liver during fetal life. Alpha-fetoprotein expression in adults is often associated with hepatocarcinoma and with teratoma, and has prognostic value for managing advanced gastric cancer. However, hereditary persistence of alpha-fetoprotein may also be found in individuals with no obvious pathology. The protein is thought to be the fetal counterpart of serum albumin, and the alpha-fetoprotein and albumin genes are present in tandem in the same transcriptional orientation on chromosome 4. Alpha-fetoprotein is found in monomeric as well as dimeric and trimeric forms, and binds copper, nickel, fatty acids and bilirubin. The level of alpha-fetoprotein in amniotic fluid is used to measure renal loss of protein to screen for spina bifida and anencephaly. [provided by RefSeq, Oct 2019]

Protein Families: Druggable Genome, Secreted Protein

Product images:



Coomassie blue staining of purified AFP protein (Cat# [TP306622]). The protein was produced from HEK293T cells transfected with AFP cDNA clone (Cat# [RC206622]) using MegaTran 2.0 (Cat# [TT210002]).