

## Product datasheet for PH306620

### Amphiphysin (AMPH) (NM\_001635) Human Mass Spec Standard

#### Product data:

Product Type:	Mass Spec Standards
Description:	AMPH MS Standard C13 and N15-labeled recombinant protein (NP_001626)
Species:	Human
Expression Host:	HEK293
Expression cDNA Clone or AA Sequence:	RC206620
Predicted MW:	76.2 kDa
Protein Sequence:	>RC206620 protein sequence Red=Cloning site Green=Tags(s)

MADIKTGIFAKNVQKRLNRAQEKVLQKLGKADETKDEQFEEYVQNFKRQEAEGTRLQRELRYLAAIKGM  
QEASMKL TESLHEVYEPDWYGRELVKMGVEKCDVLWEDFHQKLV DGSLLTLDTYLGQFPDINKRIAKRSR  
KLVYDYSARHHEALQSSKRKDESRI SKAE EEFQKAQKVFEFNVDLQEELPSLWSRRVGFYVNTFKNVS  
SLEAKFHKEIAVLCHKLYEVMTKLGDQHADKAFTIQGAPSDSGPLRIAKTPSPPEEPSPLPSPTASPNT  
LAPASPAPARPRSPSQTRKGPPVPLPKVTPTKELQQENIISFFEDNFVPEISVTTSPQNEVPEVKKEET  
LLDLDFDPFKPEVTPAGSAGVTHSPMSQTL PWDLWTTSTDLVQPASGGSFNGFTQPQDTSLFTMQTDQSM  
ICNLAESEQAPPTPKAEPLAAVTPAVGLDLGMDTRAEEPVEEAVIIPGADADAAGVTLVSAAEAGAPGE  
EAEAEATATVPAGEGVSLEEAKIGTETTEGAESAQPEAELEATVPQEKVIPSVVIEPASNHEEEGENEIT  
IGAEPKETTEDAAPPGPTSETPELATEQKPIQDPQPTSPAPAMGAADQLASAREASQELPPGFLYKVELL  
HDFEAANSDELTLQRGDVVLVVPDSEADQDAGWLVGKESDWLQYRDLATYKGLFPENFTRRLD

TRTRPLEQKLISEEDLAANDILDYKDDDDKV

Tag:	C-Myc/DDK
Purity:	> 80% as determined by SDS-PAGE and Coomassie blue staining
Concentration:	>0.05 µg/µL as determined by microplate BCA method
Labeling Method:	Labeled with [U- 13C6, 15N4]-L-Arginine and [U- 13C6, 15N2]-L-Lysine
Buffer:	25 mM Tris-HCl, 100 mM glycine, pH 7.3
Storage:	Store at -80°C. Avoid repeated freeze-thaw cycles.
Stability:	Stable for 3 months from receipt of products under proper storage and handling conditions.
RefSeq:	<a href="#">NP_001626</a>
RefSeq Size:	3426



[View online »](#)

RefSeq ORF: 2085

Synonyms: AMPH1

Locus ID: 273

UniProt ID: [P49418](#)

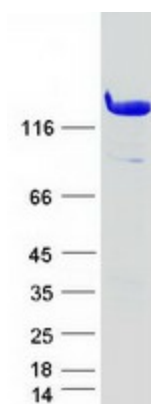
Cytogenetics: 7p14.1

**Summary:** This gene encodes a protein associated with the cytoplasmic surface of synaptic vesicles. A subset of patients with stiff-man syndrome who were also affected by breast cancer are positive for autoantibodies against this protein. Alternate splicing of this gene results in two transcript variants encoding different isoforms. Additional splice variants have been described, but their full length sequences have not been determined. A pseudogene of this gene is found on chromosome 11.[provided by RefSeq, Nov 2010]

**Protein Families:** Secreted Protein

**Protein Pathways:** Fc gamma R-mediated phagocytosis

### Product images:



Coomassie blue staining of purified AMPH protein (Cat# [TP306620]). The protein was produced from HEK293T cells transfected with AMPH cDNA clone (Cat# [RC206620]) using MegaTran 2.0 (Cat# [TT210002]).