

Product datasheet for PH306612

CD2 (NM_001767) Human Mass Spec Standard

Product data:

Product Type:	Mass Spec Standards
Description:	CD2 MS Standard C13 and N15-labeled recombinant protein (NP_001758)
Species:	Human
Expression Host:	HEK293
Expression cDNA Clone or AA Sequence:	RC206612
Predicted MW:	39.4 kDa
Protein Sequence:	>RC206612 protein sequence Red=Cloning site Green=Tags(s)
	MSFPCKFVASFLLI FNVSSKGAVSKEITNALETWGALGQDINLDIPSFQMSDDIDDIKWEKTS DKKKIAQ FRKEKETFK EKDTYKLFKNGTLKIKHLKTDDQDIYKVS IYDTKGKNVLEKIFDLKIQERVSKPKISWTCI NTTLTCEVMNGTDPELNLYQDGKHLKLSQRVITHKWTSLSAKFCTAGNKVSKESSVEPVSCPEKGLDI YLIIIGICGGGSLLMVFVALLVFYITKRKKQRSRRNDEELETRAHRVATEERGRKPQQIPASTPQNPATSQ HPPPPPGHRSQAPSHRPPPPGHRVQHQPQRPPAPSGTQVHQQKGPPLPRPRVQPKPPHGAENSLSPSS N
	TRTRPLEQKLI SEEDLAANDILDYKDDDDKV
Tag:	C-Myc/DDK
Purity:	> 80% as determined by SDS-PAGE and Coomassie blue staining
Concentration:	>0.05 µg/µL as determined by microplate BCA method
Labeling Method:	Labeled with [U- ¹³ C ₆ , ¹⁵ N ₄]-L-Arginine and [U- ¹³ C ₆ , ¹⁵ N ₂]-L-Lysine
Buffer:	25 mM Tris-HCl, 100 mM glycine, pH 7.3
Storage:	Store at -80°C. Avoid repeated freeze-thaw cycles.
Stability:	Stable for 3 months from receipt of products under proper storage and handling conditions.
RefSeq:	<u>NP_001758</u>
RefSeq Size:	1595
RefSeq ORF:	1053
Synonyms:	LFA-2; SRBC; T11
Locus ID:	914



[View online »](#)

UniProt ID: [P06729](#), [Q53F96](#)

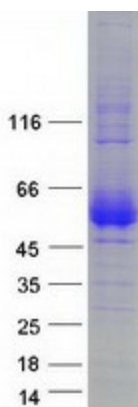
Cytogenetics: 1p13.1

Summary: The protein encoded by this gene is a surface antigen found on all peripheral blood T-cells. The encoded protein interacts with LFA3 (CD58) on antigen presenting cells to optimize immune recognition. A locus control region (LCR) has been found in the 3' flanking sequence of this gene. [provided by RefSeq, Jun 2016]

Protein Families: Druggable Genome, Transmembrane

Protein Pathways: Cell adhesion molecules (CAMs), Hematopoietic cell lineage

Product images:



Coomassie blue staining of purified CD2 protein (Cat# [TP306612]). The protein was produced from HEK293T cells transfected with CD2 cDNA clone (Cat# [RC206612]) using MegaTran 2.0 (Cat# [TT210002]).