

Product datasheet for PH306610

SIGLEC5 (NM_003830) Human Mass Spec Standard

Product data:

Product Type:	Mass Spec Standards
Description:	SIGLEC5 MS Standard C13 and N15-labeled recombinant protein (NP_003821)
Species:	Human
Expression Host:	HEK293
Expression cDNA Clone or AA Sequence:	RC206610
Predicted MW:	60.7 kDa
Protein Sequence:	>RC206610 protein sequence Red=Cloning site Green=Tags(s)

MLPLLLLPLLWGGSLQEKPVYELQVQKSVTVQEGLCVLVPCSFSPWRSWYSSPPLYVYVWFRDGEIPYYA
EIVATNPNDRRVKPEAQGRFRLLGDVQKKNCSLSIGDARMEDTGSYFFRVERGRDVKYSYQKNLNEVT
ALIEKPD IHFLEPLESGRPTRLSCSLPGSCEAGPPLTF SWTGNALSPLDPETTRSSELT LTPRPEDHGTN
LTCQMKRQGAQVTTERTVQLNVSYPQTITIFRNGIALEILQNTSYLPVLEGGQALRLLCDAPSNPPAHL S
WFQGSALNATPISNTGILELRRVRSAAEEGGFTCRAQHPLGFLQIFLNL SVYSLPQLLGPSCSWEAEG LH
CRCSFRARPAPSLCWRLEEKPLEGNSSQGSFKVNSSSAGPWANSSLI LHGGLSSDLKVSKAWNIYGSQS
GSVLLQGRSNLGTGVVPAALGGAGVMALLCICLCLIFLIVKARRKQAAGRPEKMDDEDPIMGTITSGS
RKKPWPD SAGDQASPPGDAPPLEEQKELHYASLSFSEMKSREPKDQEAPSTTEYSEIKTSK

TRTRPLEQKLI SEEDLAANDILDYKDDDDKV

Tag:	C-Myc/DDK
Purity:	> 80% as determined by SDS-PAGE and Coomassie blue staining
Concentration:	>0.05 µg/µL as determined by microplate BCA method
Labeling Method:	Labeled with [U- 13C6, 15N4]-L-Arginine and [U- 13C6, 15N2]-L-Lysine
Buffer:	25 mM Tris-HCl, 100 mM glycine, pH 7.3
Storage:	Store at -80°C. Avoid repeated freeze-thaw cycles.
Stability:	Stable for 3 months from receipt of products under proper storage and handling conditions.
RefSeq:	<u>NP_003821</u>
RefSeq Size:	2523
RefSeq ORF:	1653



[View online »](#)

Synonyms: CD33L2; CD170; OB-BP2; OBBP2; SIGLEC-5

Locus ID: 8778

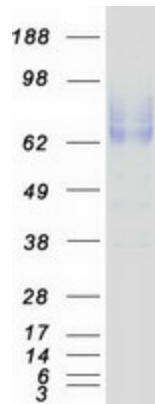
UniProt ID: [O15389](#)

Cytogenetics: 19q13.41

Summary: This gene encodes a member of the sialic acid-binding immunoglobulin-like lectin (Siglec) family. These cell surface lectins are characterized by structural motifs in the immunoglobulin (Ig)-like domains and sialic acid recognition sites in the first Ig V set domain. The encoded protein is a member of the CD33-related subset of Siglecs and inhibits the activation of several cell types including monocytes, macrophages and neutrophils. Binding of group B Streptococcus (GBS) to the encoded protein plays a role in GBS immune evasion. [provided by RefSeq, Feb 2012]

Protein Families: Druggable Genome, Transmembrane

Product images:



Coomassie blue staining of purified SIGLEC5 protein (Cat# [TP306610]). The protein was produced from HEK293T cells transfected with SIGLEC5 cDNA clone (Cat# [RC206610]) using MegaTran 2.0 (Cat# [TT210002]).