

Product datasheet for PH306595

GCAP1 (GUCA1A) (NM_000409) Human Mass Spec Standard

Product data:

Product Type:	Mass Spec Standards
Description:	GUCA1A MS Standard C13 and N15-labeled recombinant protein (NP_000400)
Species:	Human
Expression Host:	HEK293
Expression cDNA Clone or AA Sequence:	RC206595
Predicted MW:	22.9 kDa
Protein Sequence:	>RC206595 protein sequence Red=Cloning site Green=Tags(s) MGNVMEGKSVEELSSTECHQWYKFMTECPGQLTLYEFRQFFGLKNLSPSASQYVEQMFETDFNKGDY IDFMEYVAALSLVLKGVKVEQKLRWYFKLYDVDGNGCIDRDELLTIIQAIRAINPCSDTTMTAEFEFTDTVF SKIDVNGDGELSLEEFIEGVQKQMLLDLTLRSLDLTRIVRRLQNGEQDEEGADEAAEAAG TRTRPLEQKLI SEEDLAANDILDYKDDDDKV
Tag:	C-Myc/DDK
Purity:	> 80% as determined by SDS-PAGE and Coomassie blue staining
Concentration:	>0.05 µg/µL as determined by microplate BCA method
Labeling Method:	Labeled with [U- ¹³ C ₆ , ¹⁵ N ₄]-L-Arginine and [U- ¹³ C ₆ , ¹⁵ N ₂]-L-Lysine
Buffer:	25 mM Tris-HCl, 100 mM glycine, pH 7.3
Storage:	Store at -80°C. Avoid repeated freeze-thaw cycles.
Stability:	Stable for 3 months from receipt of products under proper storage and handling conditions.
RefSeq:	NP_000400
RefSeq Size:	1918
RefSeq ORF:	603
Synonyms:	GUCA1A; GUCA1ANB-GUCA1A
Locus ID:	2978
UniProt ID:	P43080



[View online »](#)

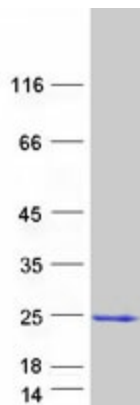
Cytogenetics: 6p21.1

Summary: This gene encodes an enzyme that plays a role in the recovery of retinal photoreceptors from photobleaching. This enzyme promotes the activity of retinal guanylyl cyclase-1 (GC1) at low calcium concentrations and inhibits GC1 at high calcium concentrations. Mutations in this gene can cause cone dystrophy 3 and code-rod dystrophy 14. provided by RefSeq, Jul 2020]

Protein Families: Druggable Genome

Protein Pathways: Olfactory transduction

Product images:



Coomassie blue staining of purified GUCA1A protein (Cat# [TP306595]). The protein was produced from HEK293T cells transfected with GUCA1A cDNA clone (Cat# [RC206595]) using MegaTran 2.0 (Cat# [TT210002]).